

SENSOR DOCUMENTATION	31/01/2005	RPM	RPM clip for KART
Notes: RPM clip technical documentation, dimensions and pinout. – Version 1.01			

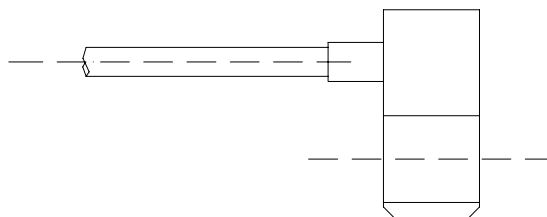


Figure 1: RPM clip (side view)

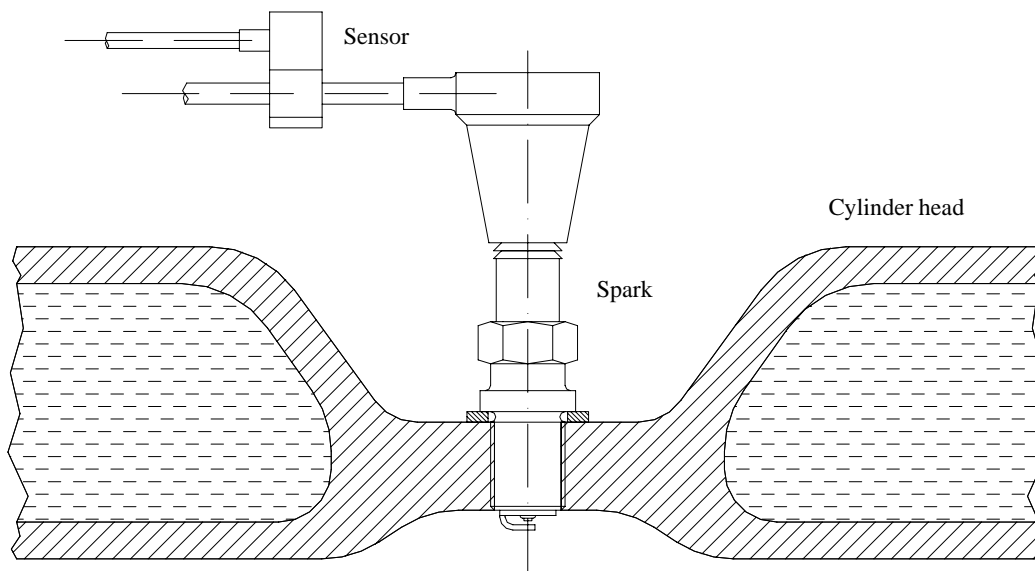
## Introduction

The RPM clip wire is designed to be plugged directly on the spark plug wire and is used for RPM pick up from monocylinder, 2-4 stroke engines.

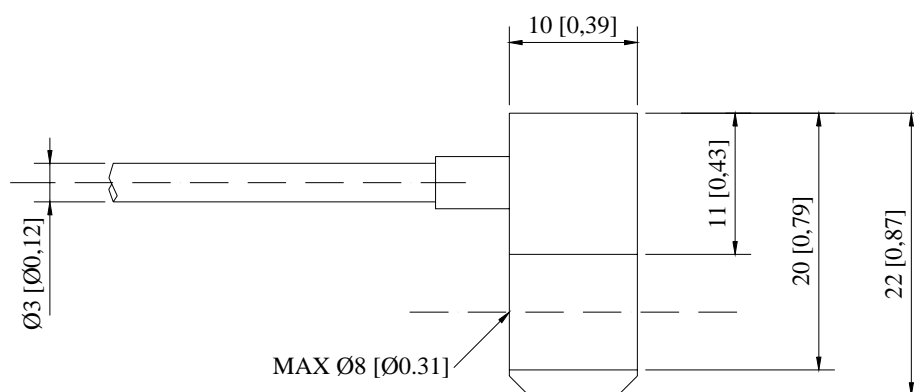
## Installation notes

- Plug the RPM clip directly on the spark plug wire;
- **When running the cable along the chassis, the RPM cable should be positioned as far as possible from the thermocouple wire;**
- We suggest to use plastic wrappers ties to securely attach the RPM cable to the chassis to prevent movements and damages.

In the following picture it is reported a RPM sensor installation drawing.



## Dimensions



Dimensions in millimeters [inches]

## Technical characteristics

Characteristics	Value
Sensor type	Inductive
Maximum RPM plug diameter	8 mm
Cable length	1500 mm