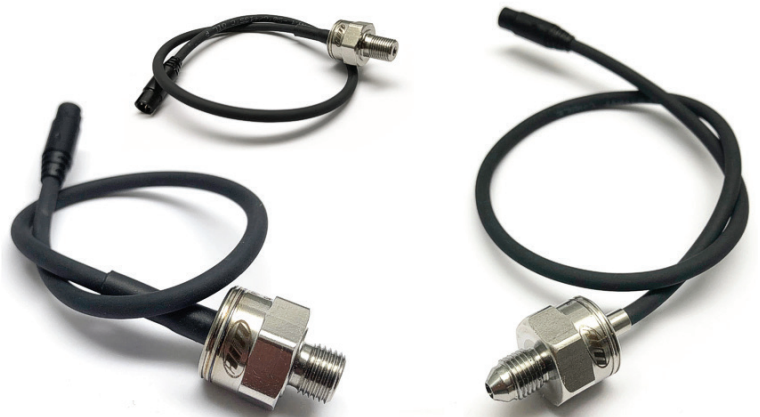


AiM Infotech

Configuration
with Race Studio 3 of
AiM 0-10 bar pressure sensor

Release 1.00



1

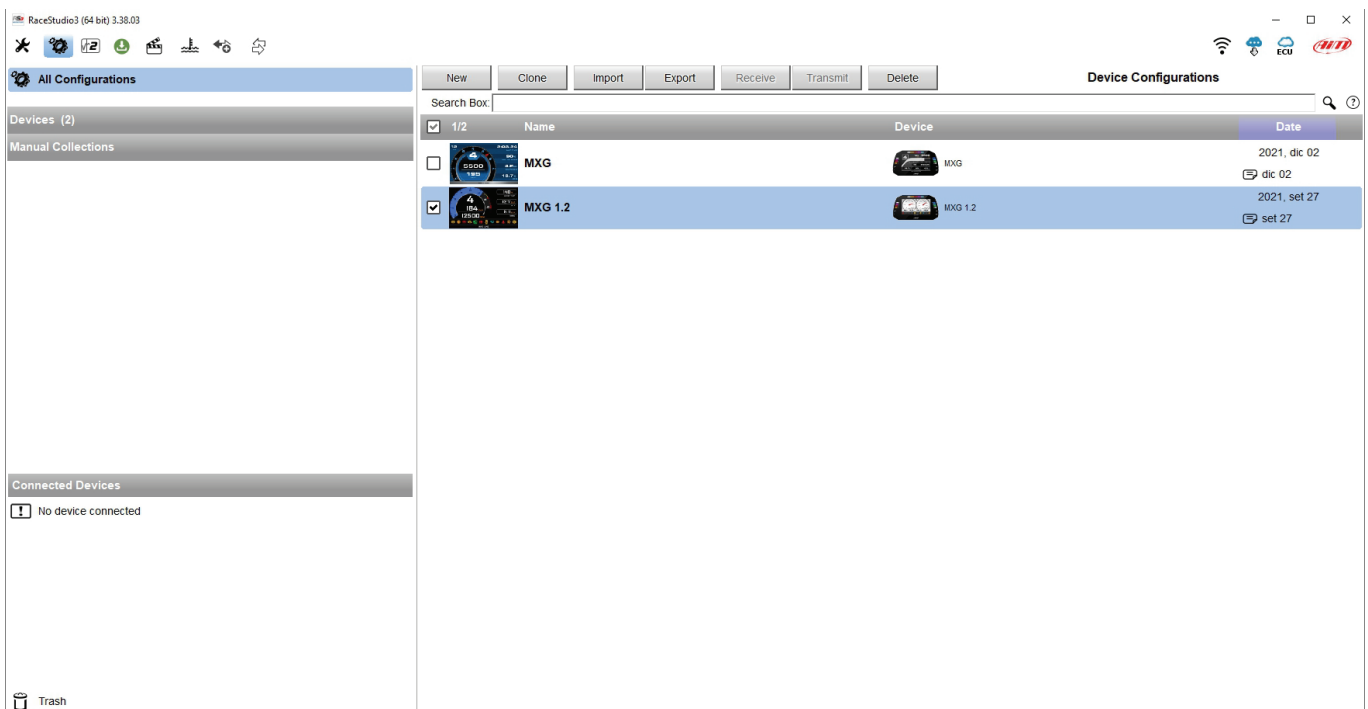
Introduction

Once the sensor is physically connected to one of the device channels, it has to be loaded in the related configuration using AiM **Race Studio 3** configuration software.

2

Setup with Race Studio 3

To load the sensor in the configuration, keeping the device switched on and connected to the PC, run the software and select the configuration where to load the sensor on (MXG 1.2 in the example).





The software enters “Channels” layer: select the channel where to load the sensor on and fill in the panel that is prompted.

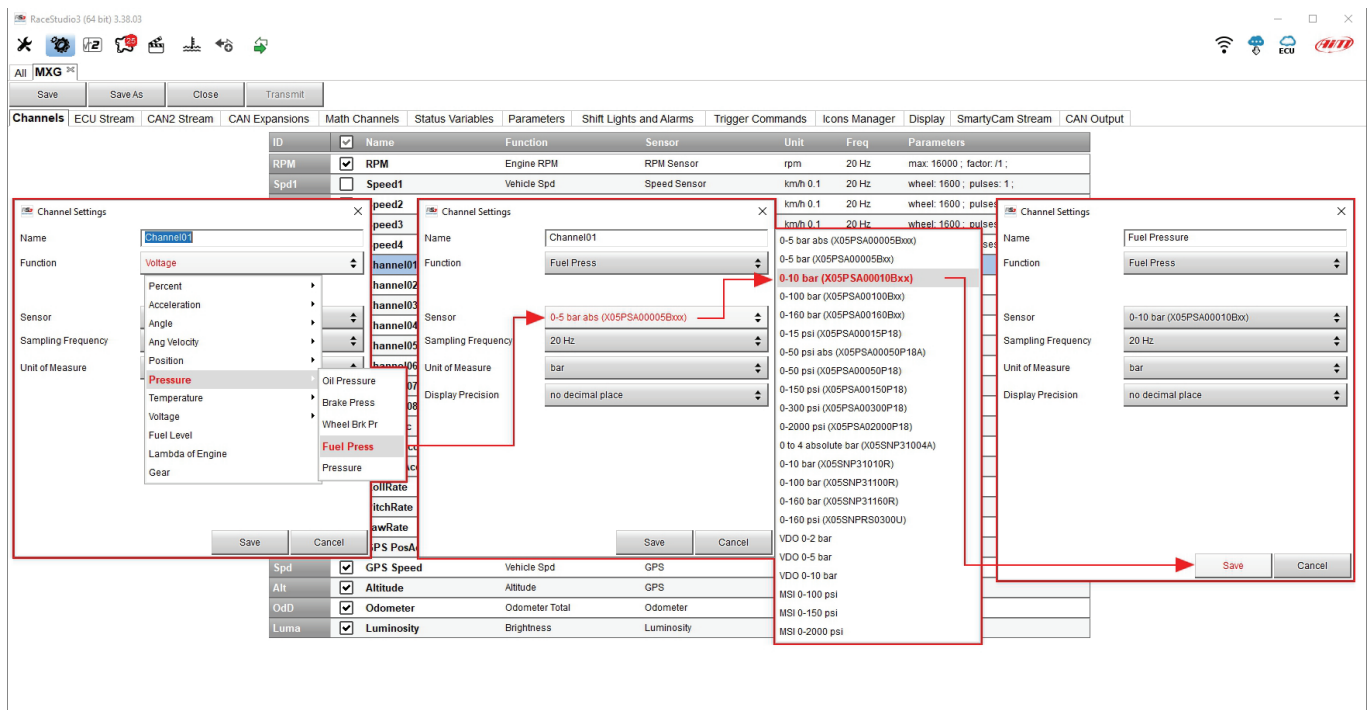
Please note: different AiM devices have a different channels management; this is why “Channel Settings” is different according to the device to configure.

AiM devices that manages the channel **only as analog** are:

- SW4
- EVO5
- EVO4S
- MXL2/MXG/MXS/MXS Strada
- MXm
- MXK10 Gen4
- MXK10 Gen5

To configure the sensor:

- click the channel where to load the sensor on
- "Channel setting" panel is prompted: select the function "Pressure" and the pressure type among:
 - Oil Pressure
 - Brake Pressure
 - Wheel Brake Pressure
 - Fuel pressure (as in the example)
 - Pressure (generic pressure)
- the software sets a specific sensor: click it and select "AiM 0-10 bar (X05PSA00010Bxx)"
- press "Save"



AiM devices that manage the channel both **as analog and as digital** are:

- MX2E
- MXS 1.2/MXP/MXG 1.2
- MXS 1.2 Strada/MXP Strada/MXG 1.2 Strada
- MXL2/MXG/MXS/MXS Strada
- MXsl

To configure the sensor:

- click the channel where to load the sensor on
- "Channel setting" is prompted: select "Analog" management
- select the configuration function "Pressure" and the pressure type among:
 - Oil Pressure
 - Brake Pressure
 - Wheel Brake Pressure
 - Fuel pressure (as in the example)
 - Pressure (generic pressure)
- the software sets a specific sensor: click it and select "AiM 0-10 bar (X05PSA00010Bxx)"
- press "Save"

