

AiM InfoTech

AiM pressure sensor
0-50 PSI absolute
Race Studio 2 configuration

Release 1.00





1

Introduction

Once AiM pressure sensor 0-50 PSI absolute is physically connected to one of the device analog channels, it has to be loaded in the related configuration using AiM configuration software. In this datasheet it is loaded using **Race Studio 2** software.

You can proceed in two ways: importing the sensor configuration file, downloading it from the Products – Sensors (car/bike) section of our website www.aim-sportline.com, or creating a custom sensor.

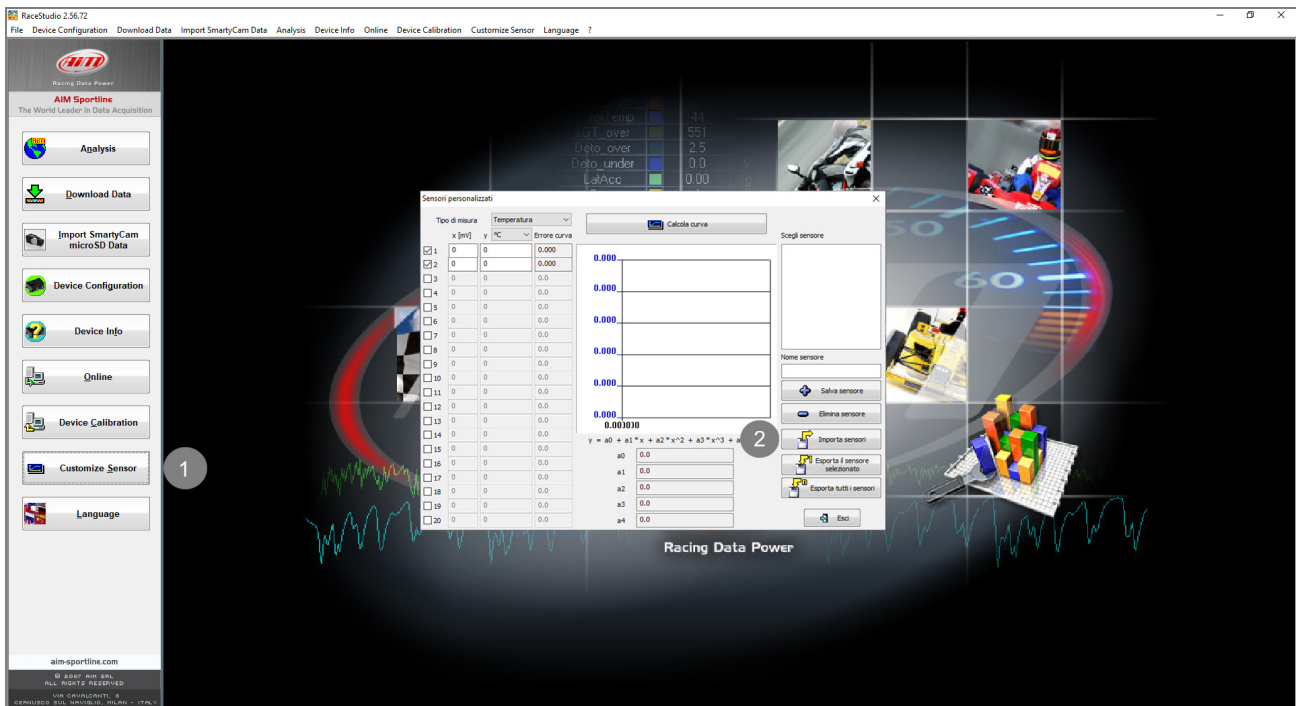
2 SCF* file import

To obtain the sensor configuration file, enter the Products – Sensors (car/bike) section of the AiM website www.aim-sportline.com, and click the link referred to the sensor you own (following image). Once the download is finished, save the file in a PC folder.

PRESSURE SENSORS						
Turbo pressure sensor from -1 to 3 Bar	X05SNP31004A		Datasheet	RS3 conf	RS2 conf	SCF*
Pressure sensor 0-10 bar/0-145 PSI	X05SNP31010R		Datasheet	RS3 conf	RS2 conf	SCF*
Pressure sensor 0-100 bar/0-1450 PSI	X05SNP31100R		Datasheet	RS3 conf	RS2 conf	SCF*
Pressure sensor 0-160 bar/0-2320 PSI	X05SNP31160R		Datasheet	RS3 conf	RS2 conf	SCF*
VDO pressure sensor 0-5 Bar	X05SNBO05		Datasheet	RS3 conf	RS2 conf	
VDO pressure sensor 0-10 Bar	X05SNBO00		Datasheet	RS3 conf	RS2 conf	

*Download the sensor configuration file ready to import in RS2

To import the file in Race Studio 2, making it available in the pressure sensors list, from the Customize Sensors window (1), click Import Sensors (2) and select the saved file.

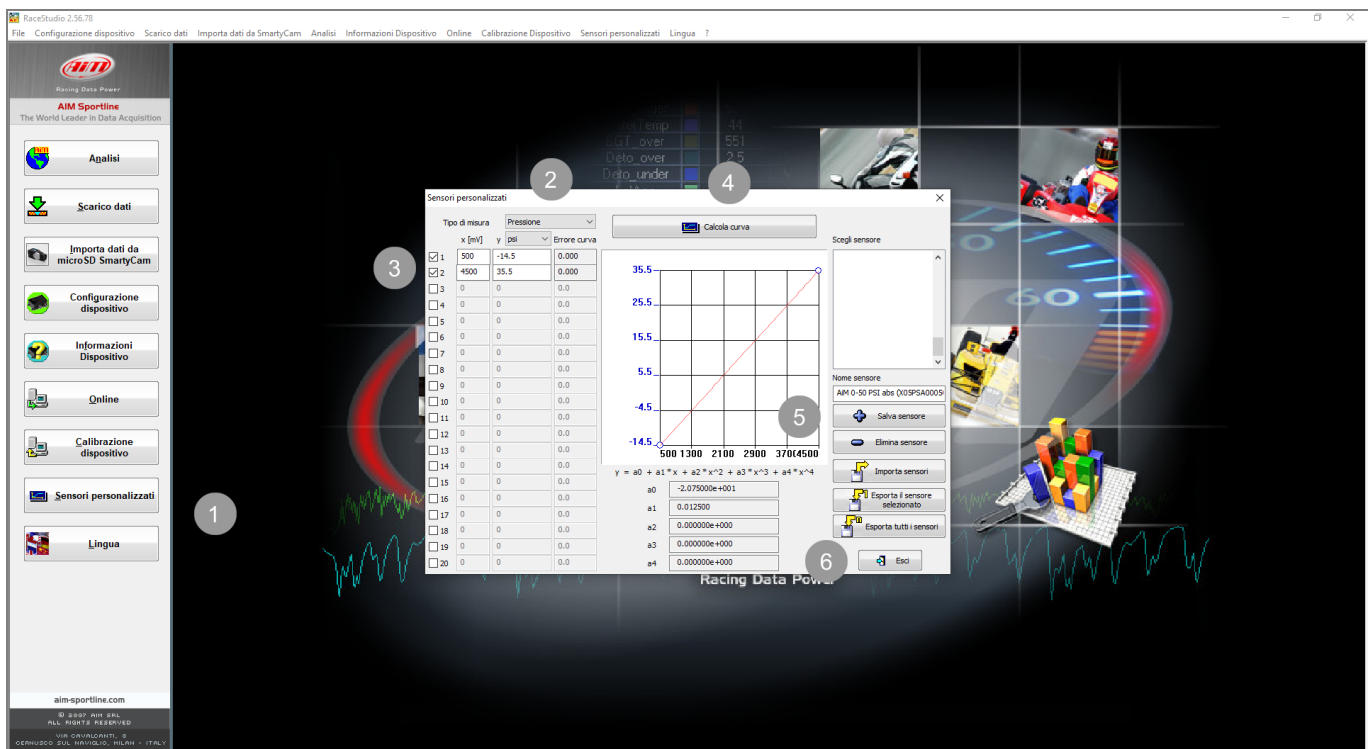


3 Custom sensor creation

- create a custom sensor pressing "Customize sensor" (1)
- select the type of measure (Pressure) and the measure unit (PSI) (2)
- complete the first two rows of the table on the left as follows (3):

X [mV]	Y [PSI]
500	-14.5
4500	35.5

- press "Compute curve" (4), fill in sensor name - in the example "AiM 0-50 PSI abs (X05PSA00050P18A)" – and press "Save sensor" (5); press "Exit" (6)



4 Analog channel configuration

To set the sensor in the device configuration:

- enter "Channels" tab
- set the sensor on a channel selecting " AiM 0-50 PSI abs (X05PSA00050P18A)" in sensor type column of the desired channel and transmit the configuration to the device.

