

SMARTYCAM 4

1. LED and Button



The SmartyCam 4 Corsa has two LEDs, STS (Status) and REC (Record), and a button. Their functions are indicated here.

1.1 Meaning of the LEDs

STS LED:

- **OFF:** Power OFF
- **GREEN:** Power ON
- **PURPLE:** The system is on and the battery is charging
- **BLINKING RED:** The system is off and the battery is charging

REC LED:

- **OFF:** If the STS LED is on, the software is starting up.
- **GREEN:** The SmartyCam 4 is ready to start recording. The user **CAN** remove the **USB-C** memory.
- **BLUE:** The SmartyCam 4 is recording. The user **CANNOT** remove the **USB-C** memory.



- **BLINKING GREEN:** The SmartyCam 4 is ending the recording. The user **CANNOT remove the USB-C memory.**
- **RED:** No recording request has been received (master via CAN or user via button) and the SmartyCam 4 **CANNOT record.**
- **BLINKING RED:** A recording request has been received (master via CAN or user via button) but the SmartyCam 4 **CANNOT record.**
- **WHITE:** The user has held down the button long enough to turn off the SmartyCam 4; the shutdown procedure has begun, and the button can be released.

If the button is held down further, the SmartyCam 4 will shut down under hardware control. This operation is only performed in the event of a serious problem that has caused the SmartyCam 4 to freeze.

1.2 Button Functions

The single button on the SmartyCam 4 allows you to perform the following functions:

- If the SmartyCam 4 is OFF:
 - **Short press of the button:** POWER ON
 - **Long press of the button until the REC LED turns red:** If a USB-C memory containing firmware for the SmartyCam 4 is present, the firmware is updated. The operation is considered complete when the REC LED turns GREEN.
- If the SmartyCam 4 is ON:
 - If it is not recording (REC LED GREEN):
 - **Short press of the button:** START RECORDING
 - **Long press of the button until the REC LED turns white:** POWER OFF
 - **Long press of the button until all LEDs are off:** POWER OFF (hardware check). This operation is only performed in the event of a serious problem that has caused the SmartyCam 4 to freeze.
 - If it is recording (REC LED BLUE):
 - **Short press of the button:** STOP RECORDING



2. How to manage it through RS3 App



Please download AiM RaceStudio App from App Store for iOS installations.

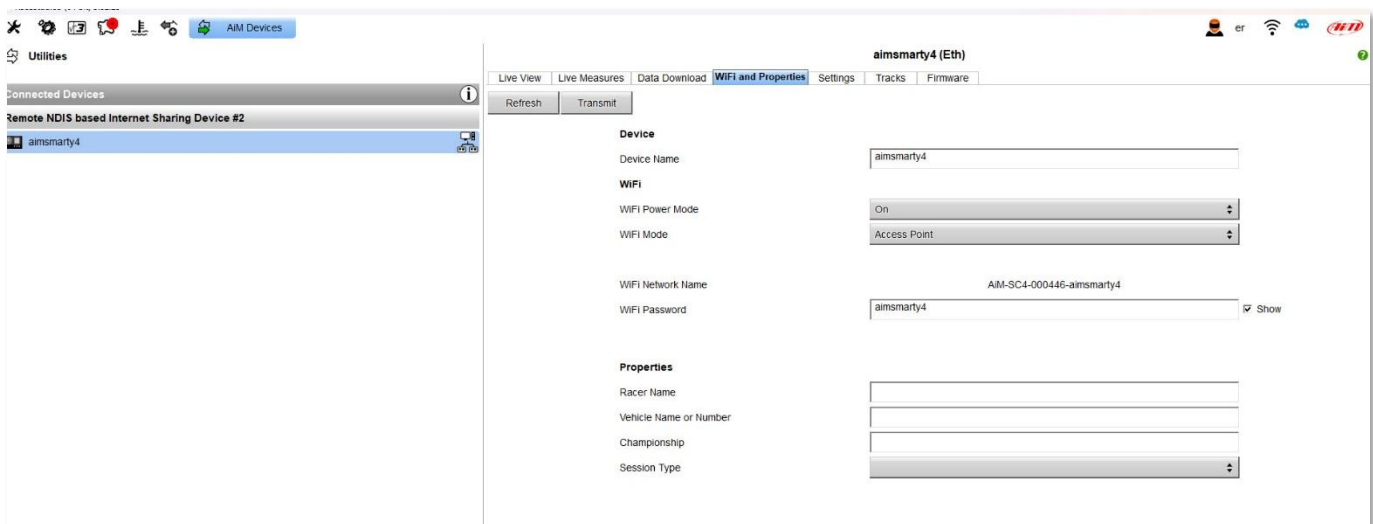
The App for Android will be available very soon.

RS3 Applets you perform the following functions:

- Status display
- Status report and command transmission
- Parameters settings
- Track map management
- Live view
- Firmware update

2.1 How to connect RS3 App to your SmartyCam 4

The first time you connect RS3 App to your SmartyCam 4, you must enter the Wi-Fi password that you defined in the page “Wi-Fi and properties” in RaceStudio 3 (software desktop) when you have configured it:



The default Wi-Fi password is: **aimsmarty4**



2.1.1 iOS

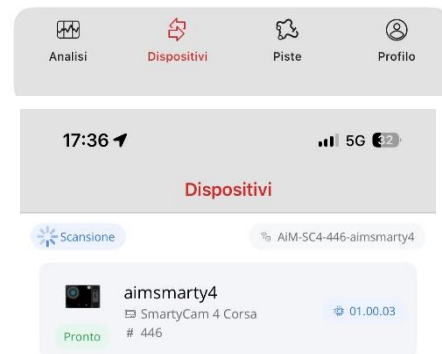
The connection between RS3 App and SmartyCam 4 is through Wi-Fi. The steps for establishing this connection are:

- Open the Settings app on your iOS device, go to Wi-Fi and select your SmartyCam.



- Open RS3 App and go to “Devices”

- Select your SmartyCam 4



RS3 App and your SmartyCam 4 are now connected. The Status page of your SmartyCam 4 appears and is explained in chapter 2.2

2.2 Status and Commands



This page shows information about the status of the SmartyCam 4. The most relevant items are:

- Recording status:
 - Waiting
 - Recording
- Battery level: when the battery drops to 10%, if no external power supply is connected, the SmartyCam 4 automatically shuts down.
- GPS: the SmartyCam 4 can obtain GPS coordinates in three different ways:
 - Connected to an AiM GPS Module, such as the GPS09-C
 - Through CAN Exp from an AiM master device such as AiM SOLO2DL or AiM MXx
 - Through CAN ECU from a non-AiM systemIn the first case, the GPS Status shows “CONNECTED” otherwise “DISCONNECTED”
- Track: it shows the selected track. If the SmartyCam 4 is connected to an AiM master device it automatically uses track currently selected on the master. Otherwise, the SmartyCam 4 automatically selects the closest track map.

The commands that you can send are:

- Start/Stop Rec
- Export Logs (this file is useful for AiM technicians in case of any problem).
- Export configuration
- Power off

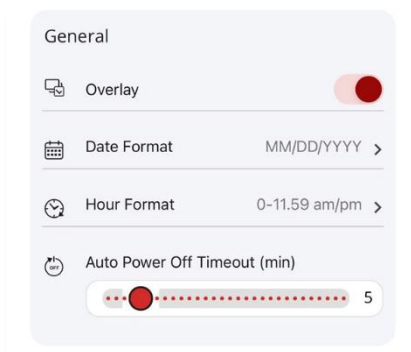
2.3 Settings

By tapping Settings, you can configure all the parameters needed to make the SmartyCam 4 work the way you want:



First of all, a preview shows what the SmartyCam 4 is framing, helping you find the best position for the camera.

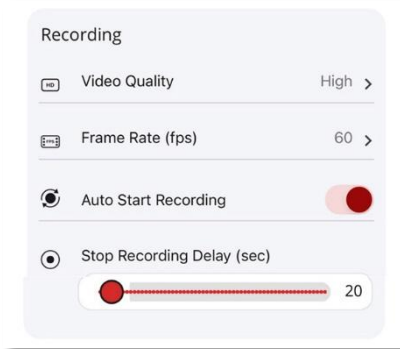
General settings



You may decide to enable or disable the overlays

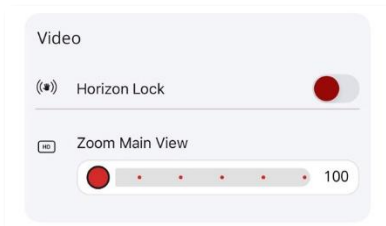
- The data format can be chosen from:
 - MM/DD/YYYY
 - DD/MM/YYYY
 - YYYY/MM/DD
 - YYYY/DD/MM
- The time format can be chosen from:
 - 1-12:59 am/pm
 - 0-24
 - 0-11:59 am/pm
- The auto power-off timeout may be set between 2 and 30 minutes

Recording



- The video quality can be set as:
 - Low: 10 Mbps
 - Normal: 15 Mbps
 - High: 20 Mbps
 - Best: 40 Mbps
- Framerate: 60 fps or 30 fps
- Auto start recording: you can choose whether to start recording according to the conditions set in the RaceStudio 3 (software desktop) configuration, or to ignore them and start recording manually from this App.
- You can set how many seconds the camera waits before stopping the recording once the conditions are no longer met.

Video



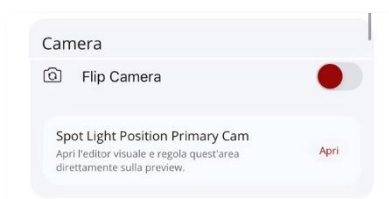
- Horizon lock: ... the horizon line remains stable regardless of the vehicle's roll.
- Zoom: you may zoom the image using this option. Please note that it is an electronic zoom, not an optical one, so when you zoom, your video loses resolution.

Audio



- SC4 has two microphones: one internal and one external that can be connected through the proper pins of a connector. You can adjust the microphone gains according to your needs

Camera



- Flip Camera: if Horizon lock is enabled, this option is not needed, since the SmartyCam 4 always keeps the horizon line in the correct position regardless of how the camera is mounted. Otherwise, if you need to install the camera upside down, this setting flips the image accordingly.

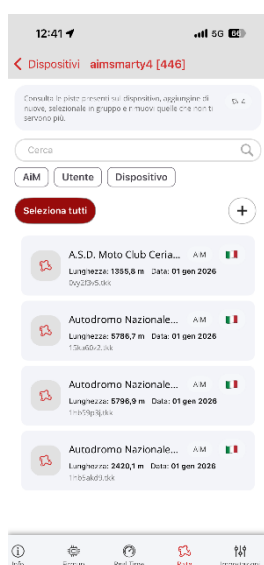


- Spot Light Area: By default, exposure is calculated on the whole image. If you want to base it on a specific area of the screen, do the following:
 - Tap the upper-left rectangle of the desired area.
 - Drag your finger to the lower-right corner of the area.
 - The selected area will be highlighted
 - Tap Apply

Session

- You can enter information to help you identify your video later.

2.4 How to transmit the track maps to SmartyCam 4



RS3 App includes all the track maps available in RaceStudio 3 (software desktop). The database is constantly updated. The automatic selection of the correct map is what allows the system to show your vehicle's position in the video and to calculate lap times.

Maps are listed by distance from your current position.

To load the desired maps onto the SmartyCam 4, tap "+" and select them. Please note that when you turn SmartyCam 4 on while at a track, it automatically recognizes which track you are on and shows the map on the video.