

AiM Infotech

AEM EMS firmware version  
1.19+ ECU

Release 1.07

---



ECU



# 1

## Supported models

---

AEM supported models are:

- EMS from firmware version 1.19 onward

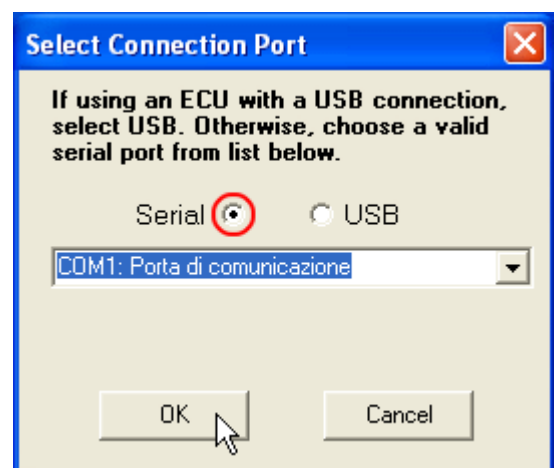
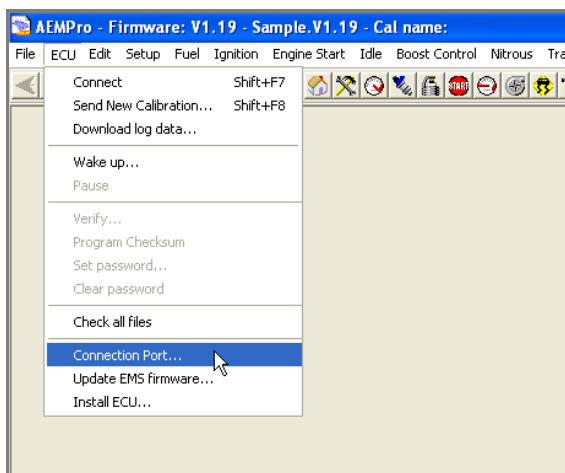
# 2

## Software setup

---

AEM EMS v1.19+ ECU needs a software setting to assure correct communication with AiM devices. "AEMPro" software can be downloaded from AEM website. Run it and follow these instructions.

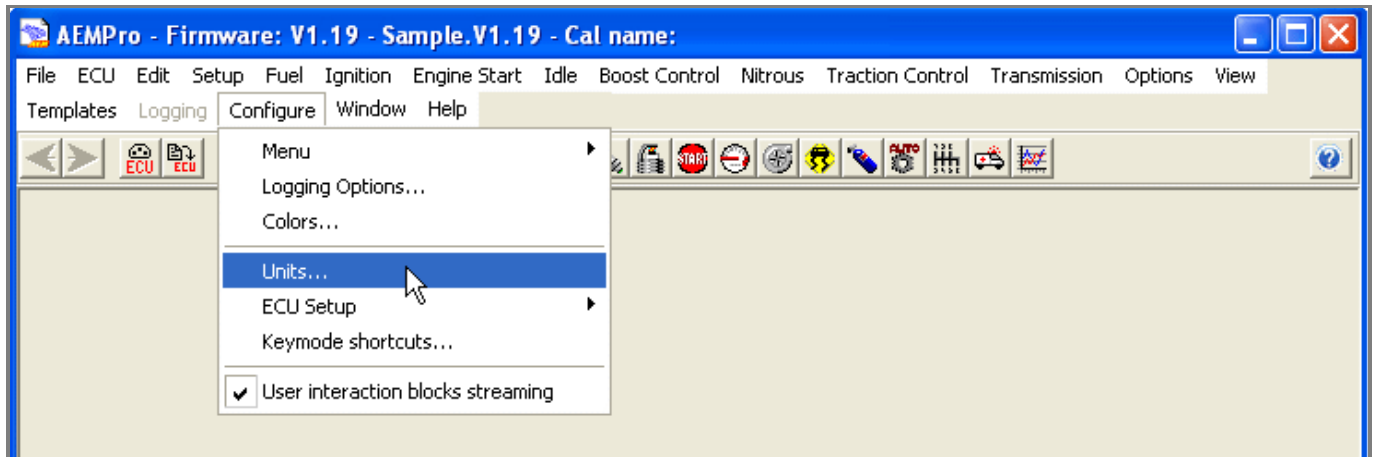
- Follow this path: "ECU -> Connection port"
- Enable "Serial" option
- Select "COM1" communication port and press "OK"



It is now necessary to set measure units of the following sensors:

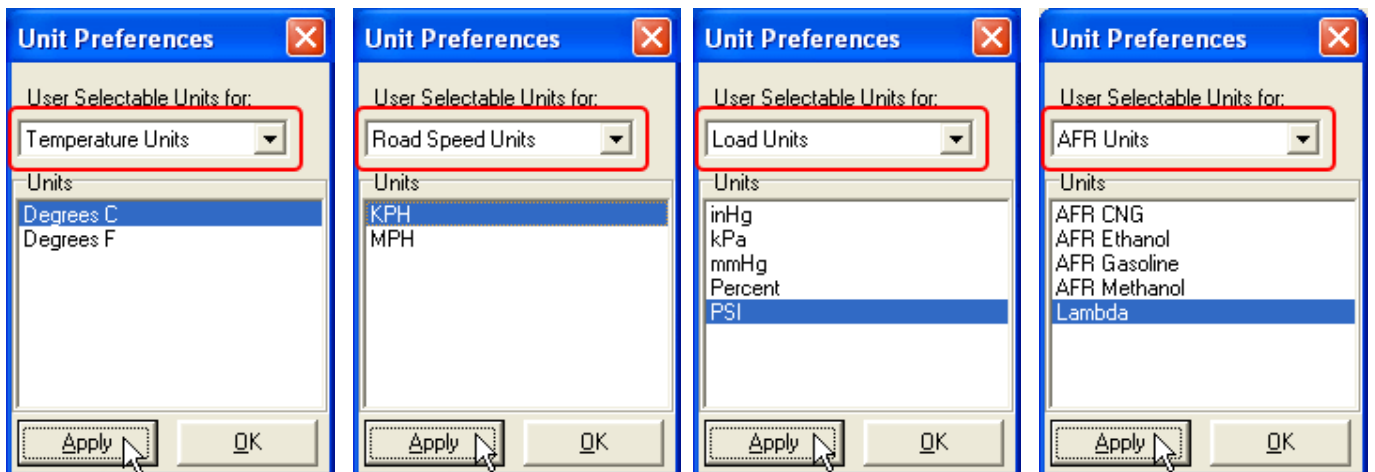
- Temperature sensors
- Speed sensors
- Engine load sensors
- Air fuel ratio sensors (lambda)

- follow this path: "Configure -> Units"



"Unit preferences" panel shows a drop down menu on top window. Here below you see the different available options:

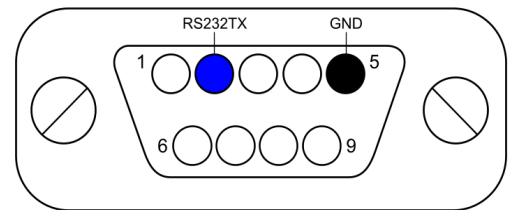
- select the measure unit you prefer
- click "Apply"



### 3

## Wiring connection

AEM EMS 1.19+ ECU features a serial communication protocol on the rear DB9 female connector. Here below on the left it is shown. On the right the connector pinout and below connection table.



#### DB9 connector pin

#### Pin function

2	RS232TX
5	GND

#### AiM cable

RS232RX
GND

### 4

## AiM Logger configuration

Before connecting the device to the ECU set it up as follows:

- Run Race Studio 2 software and follow this path:
- Device Configuration -> Select the device you are using;
- select the configuration or press "New" to create a new one;
- select ECU manufacturer "AEM" and ECU Model "EMS v1.19+";
- transmit the configuration to the device pressing "Transmit".

## 5

## Available channels

---

Channels received by AiM devices connected to "AEM" "EMS v1.19+" protocol are:

ID	CHANNEL NAME	FUNCTION
ECU_1	AEM_RPM	RPM
ECU_2	AEM_LOAD	Engine load
ECU_3	AEM_TPS	Throttle position sensor
ECU_4	AEM_AIR_TEMP	Intake air Temperature
ECU_5	AEM_WATER_TEMP	Water temperature
ECU_6	AEM_ADCR11	Pressure voltage
ECU_7	AEM_ADCR13	Gear voltage
ECU_8	AEM_ADCR14	Spare Temperature voltage
ECU_9	AEM_ADCR17	EGT#1 Voltage
ECU_10	AEM_ADCR18	EGT#2 Voltage
ECU_11	AEM_ADCR15	EGT#3 Voltage
ECU_12	AEM_ADCR16	EGT#4 Voltage
ECU_13	AEM_BATTERY	Battery Voltage
ECU_14	AEM_LAMBDA_#1	Lambda Value 1
ECU_15	AEM_LAMBDA_#2	Lambda Value 2
ECU_16	AEM_SPEED	Vehicle speed
ECU_17	AEM_GEAR	Engaged gear
ECU_18	AEM_ERROR1	Error signal
ECU_19	AEM_ERROR2	Error signal