

AiM Infotech

MBE 9A9CAN 100 ECU

Release 1.00

---



ECU



This tutorial explains how to connect MBE ECU to AiM devices. Supported models are:

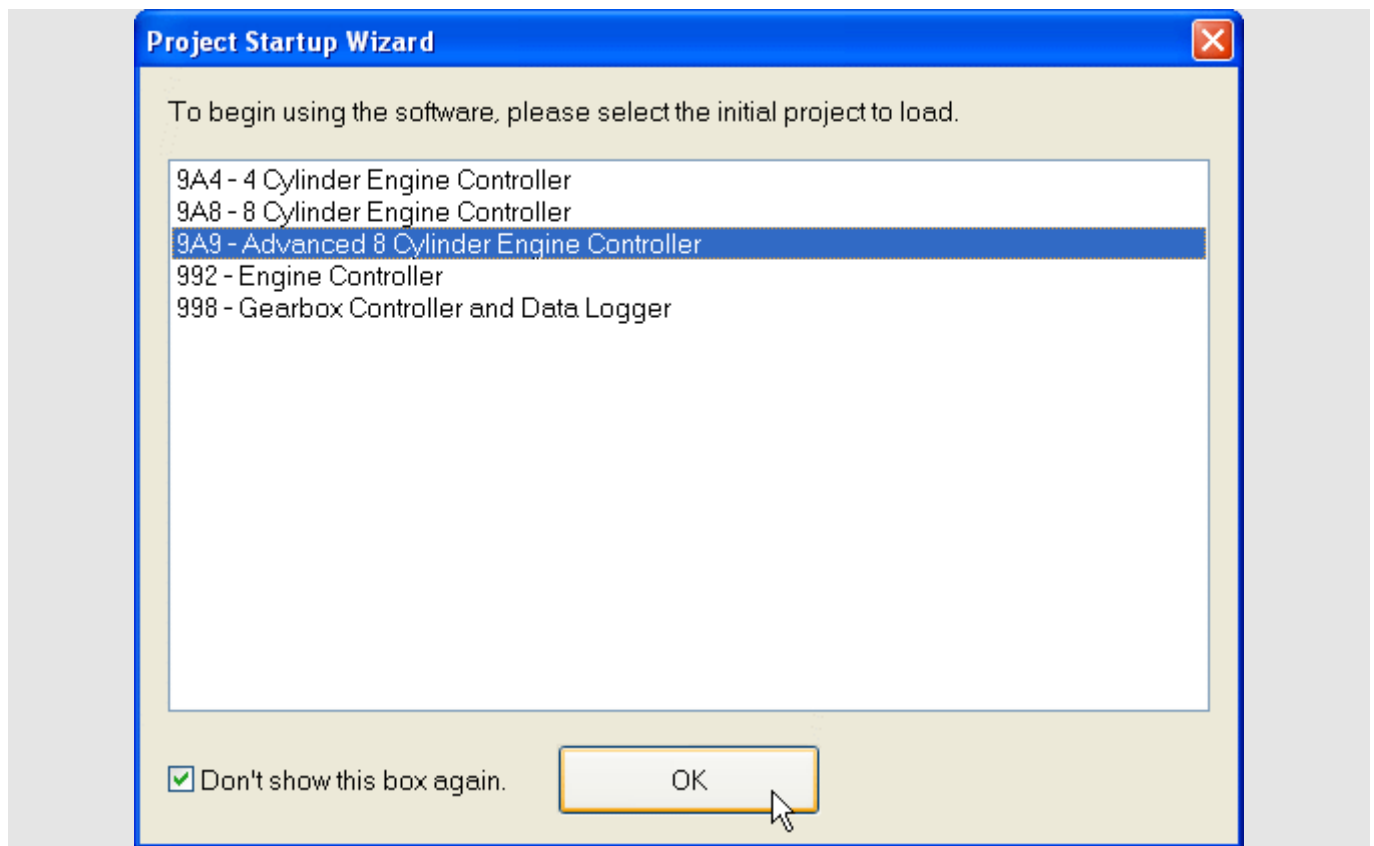
- MBE 9A9CAN

# 1

## Software Setup

---

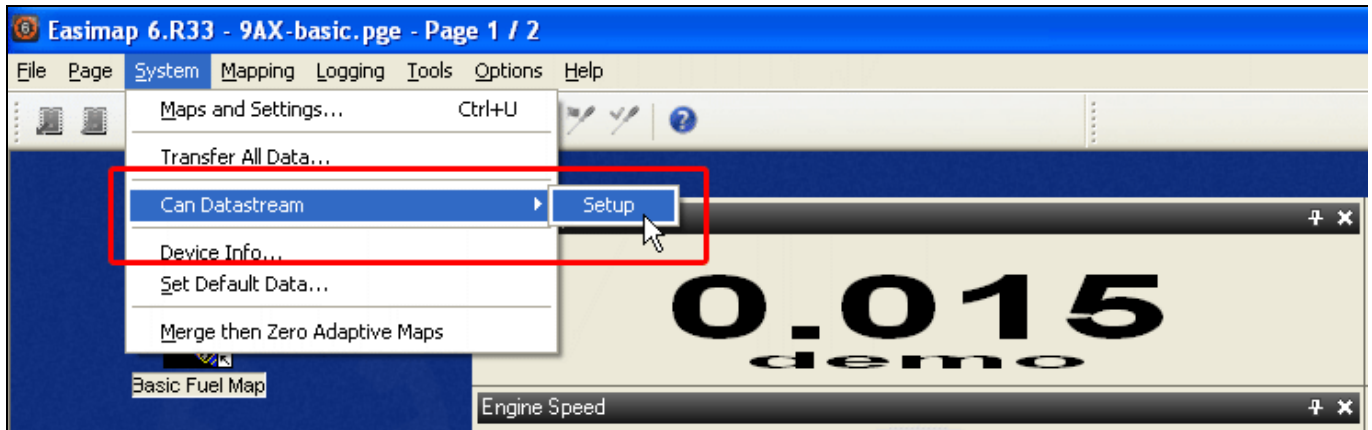
MBE ECU needs to be set up via EasiMap software. Run it and this panel appears.



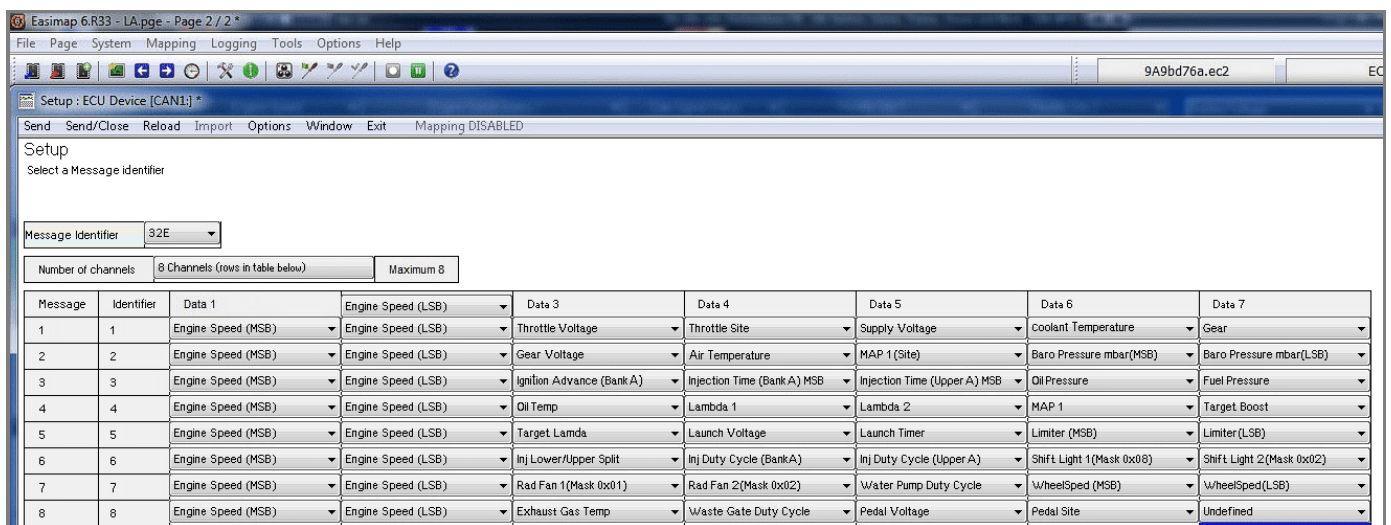
Select "9A9 – Advanced 8 Cylinder Engine Controller" and press OK.



Follow the path: "System -> Can Datastream -> Setup"



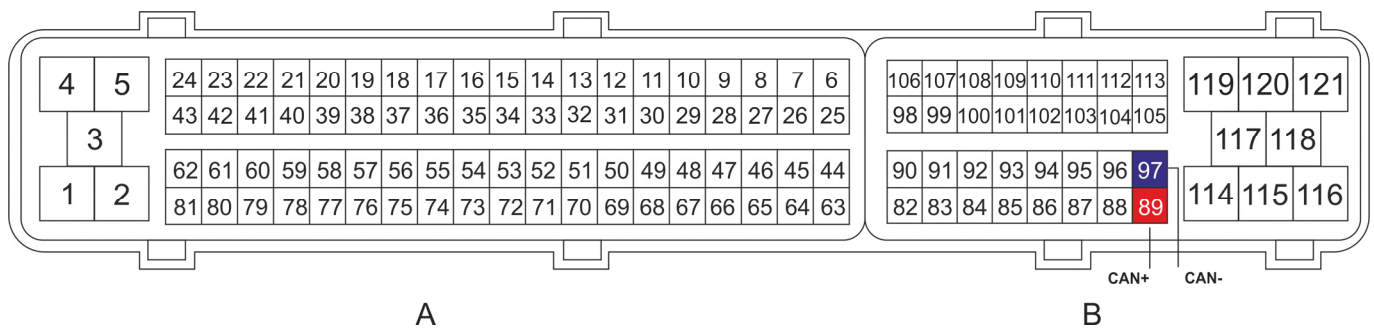
This panel appears: ensure is set up as shown below.



## 2

## CAN connection

MBE 9A9CAN ECU features a data transmission bus based on CAN. This is available on the ECU front connector. As shown below the connector is divided in two parts but pins are numbered in a single sequence from 1 to 121. Below you find connection table.



### Connector pin

### Pin function

### AiM cable

B 89

CAN High

CAN+

B 97

CAN Low

CAN-

### 3

## AiM device configuration

---

Before connecting AiM device to the ECU, set it up as follows:

Run Race Studio 2 software and select:

- Device Configuration –> Select the device you are using;
- select the configuration or press “New” to create a new one;
- select ECU manufacturer “MBE” and ECU Model “9A9CAN”
- transmit the configuration to the device pressing “Transmit”.

## 4

## Available channels

---

Channels received by AiM devices connected to MBE "9A9CAN" protocol are.

ID	CHANNEL NAME	FUNCTION
ECU_1	MBE_RPM	RPM
ECU_2	MBE_THROT_VOLT	Throttle voltage
ECU_3	MBE_THROT_SIDE	Throttle position
ECU_4	MBE_BATTERY	Battery supply
ECU_5	MBE_ENGINE_TEMP	Engine coolant temperature
ECU_6	MBE_GEAR	Engaged gear
ECU_7	MBE_GEAR_VOLT	Gear voltage
ECU_8	MBE_AIR_TEMP	Intake air temperature
ECU_9	MBE_MAP_SIDE	Manifold air pressure side
ECU_10	MBE_BARO_PRESS	Barometric pressure
ECU_11	MBE_IGNITION_ADV	Ignition advance
ECU_12	MBE_INJ_TIME	Injection time
ECU_13	MBE_INJ_TUP	Injection time on upper engine bank
ECU_14	MBE_OIL_PRESS	Oil pressure
ECU_15	MBE_FUEL_PRESS	Fuel pressure
ECU_16	MBE_OIL_TEMP	Oil temperature
ECU_17	MBE_LAMBDA1	Lambda 1
ECU_18	MBE_LAMBDA2	Lambda 2
ECU_19	MBE_MANIF_AIR_P	Manifold air pressure
ECU_20	MBE_TARGET_BOOST	Boost target
ECU_21	MBE_TARGET_LAMB	Lambda target
ECU_22	MBE_LAUNCH_VOLT	Voltage at launch
ECU_23	MBE_LAUNCH_TIME	Launch timer
ECU_24	MBE_RPM_LIMIT	RPM limiter
ECU_25	MBE_INJ_SPLIT	Injection split



ECU_26	MBE_INJ_DUTY_A	Injection duty bank A
ECU_27	MBE_INJ_DUTY_B	Injection duty bank B
ECU_28	MBE_SHIFT_1	Shift light 1
ECU_29	MBE_SHIFT_2	Shift light 2
ECU_30	MBE_RED_FAN_1	RadFan1
ECU_31	MBE_RED_FAN_2	RadFan2
ECU_32	MBE_H2O_PUMP_DC	Water pump DC
ECU_33	MBE_WHEEL_SPD	Wheel speed
ECU_34	MBE_THROTTLE_ANG	Throttle angle
ECU_35	MBE_EXH_GAS_TEMP	Exhaust gas temperature
ECU_36	MBE_WASTE_GATE	Waste Gate DC
ECU_37	MBE_PEDAL_VOLT	Pedal Voltage
ECU_38	MBE_PEDAL_SITE	Pedal site