

AiM Infotech

Stack TPMS

Release 1.00



ECU



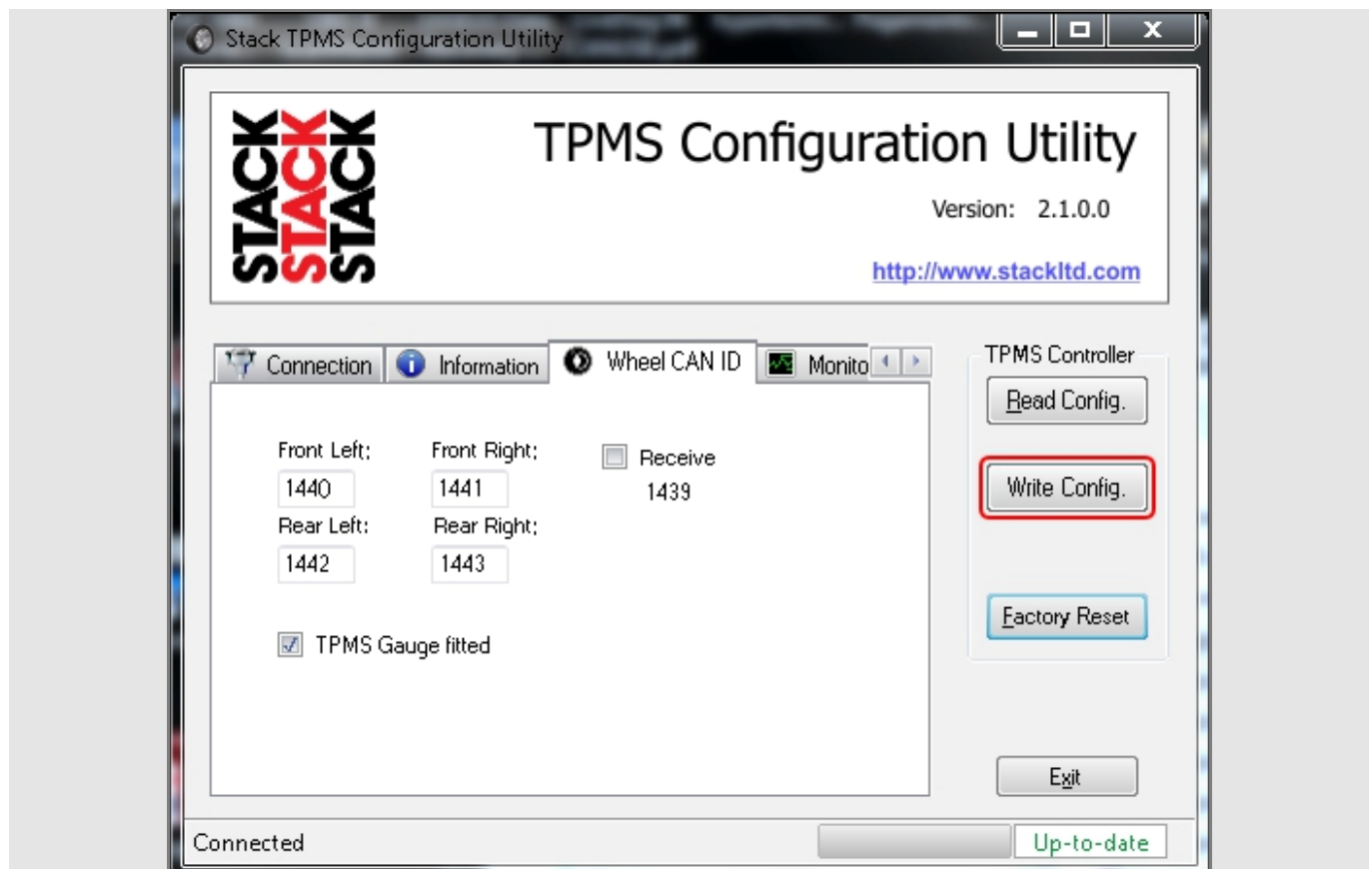
This tutorial explains how to connect Stack TPMS (Tyre Pressure Monitoring System) to AiM devices.

1

Software Check

Before connecting Stack TPMS to AiM devices a software check is needed:

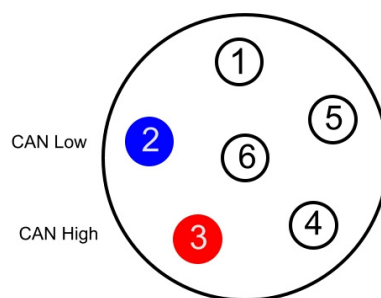
- With TPMS connected to the PC run "TPMS Configurator Utility "
- enable "Wheel CAN ID" layer
- check that values corresponding to the four wheels of the vehicle are as follows:
 - Front left: 1440
 - Front right: 1441
 - Rear left: 1442
 - Rear right: 1443
- in case the values are different manually input the correct values and press "Write config" as shown here below.



2

Wiring connection

Stack TPMS features a data transmission bus based on CAN on the 6 ways round front connector. Here below you see connector pinout (rear view) and connection table.



6 ways connector pin

3
2

Pin function

CAN High
CAN Low

AiM cable

CAN+
CAN-

2

AiM device configuration

Before connecting AiM device to the ECU, set it up as follows:

Run Race Studio 2 software and select:

- Device Configuration → Select the device you are using;
- select the configuration or press "New" to create a new one;
- select ECU manufacturer "STACK" and ECU Model "TPMS_CONTROL_UNIT"
- transmit the configuration to the device pressing "Transmit".

3

Available channels

Channels received by AiM devices connected to Stack "TPMS_CONTROL_UNIT" protocol are:

ID	CHANNEL NAME	FUNCTION
ECU_1	FL_SENS_ID_EXT	Front left wheel sensor ID extension for correct reading
ECU_2	FL_SENS_ID	Front left wheel sensor ID
ECU_3	FR_SENS_ID_EXT	Front right wheel sensor ID for correct reading
ECU_4	FR_SENS_ID	Front right wheel sensor ID
ECU_5	RL_SENS_ID_EXT	Rear left wheel sensor ID for correct reading
ECU_6	RL_SENS_ID	Rear left wheel sensor ID
ECU_7	RR_SENS_ID_EXT	Rear right wheel sensor ID for correct reading
ECU_8	RR_SENS_ID	Rear right wheel sensor ID
ECU_9	FL_PRESS	Front left wheel pressure
ECU_10	FR_PRESS	Front right wheel pressure
ECU_11	RL_PRESS	Rear left wheel pressure
ECU_12	RR_PRESS	Rear right wheel pressure
ECU_13	FL_TEMP	Front left wheel temperature
ECU_14	FR_TEMP	Front right wheel temperature
ECU_15	RL_TEMP	Rear left wheel temperature
ECU_16	RR_TEMP	Rear right wheel temperature
ECU_17	FL_ERROR	Front left wheel error
ECU_18	FR_ERROR	Front right wheel error
ECU_19	RL_ERROR	Rear left wheel error
ECU_20	RR_ERROR	Rear right wheel error