

## Configuring

# Alarms settings for MXx devices

### Question:

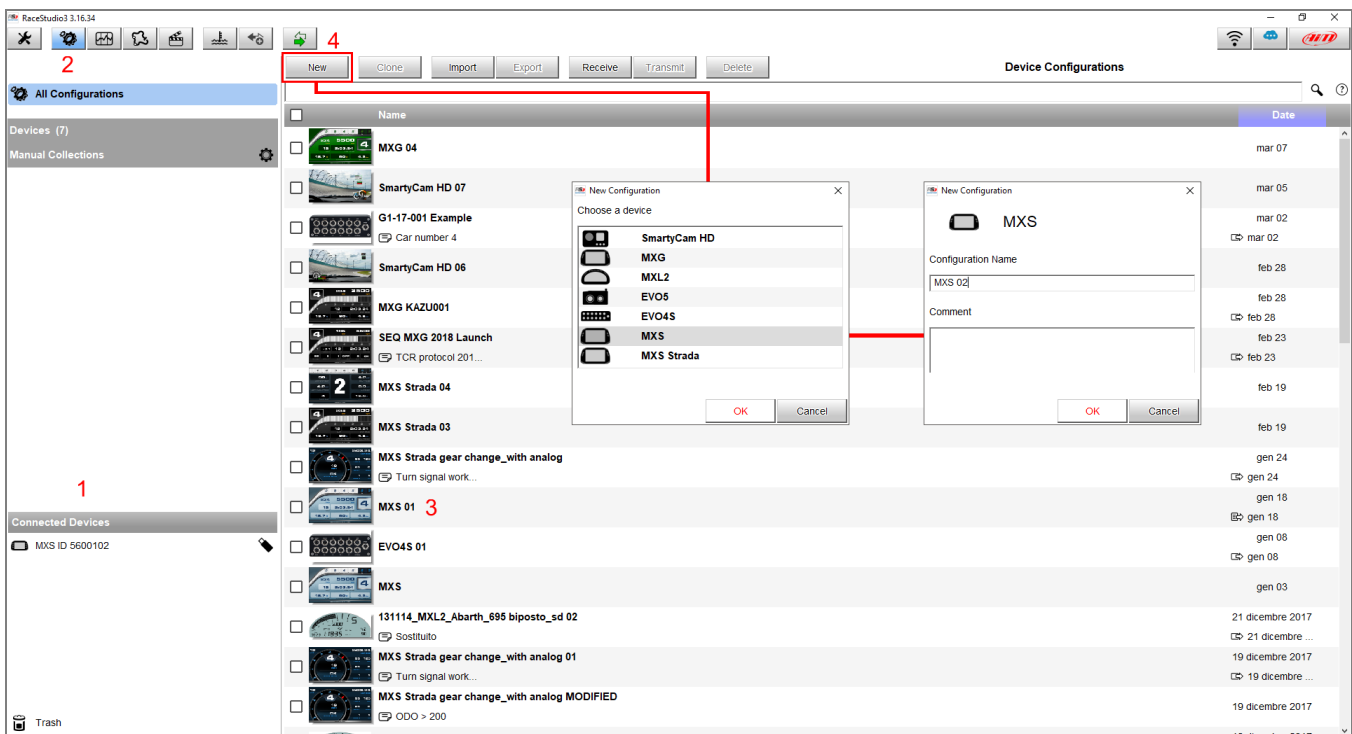
What kind of alarm can I set on my MXx device?

### Answer:

MXx devices can trigger 1 or 2 digital outputs (when available), additionally to alarm LEDs and popup messages.

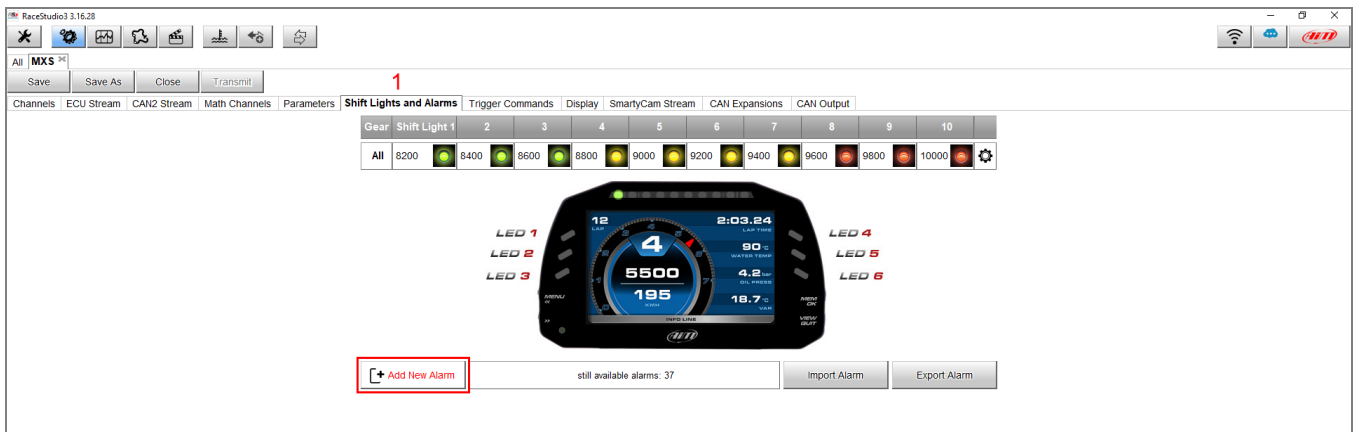
Set MXx devices alarm LEDs through Race Studio 3 in the following way:

- open Race Studio 3
- connect your device (via USB or Wi-Fi, if available): it will appear in the Connected Devices list (1; following image)
- from the Configuration section (2), select an existing configuration (3) or create a new one (4), selecting the device type and adding a name and an optional comment: press OK and the software will open the "Channels" tab



## Configuring

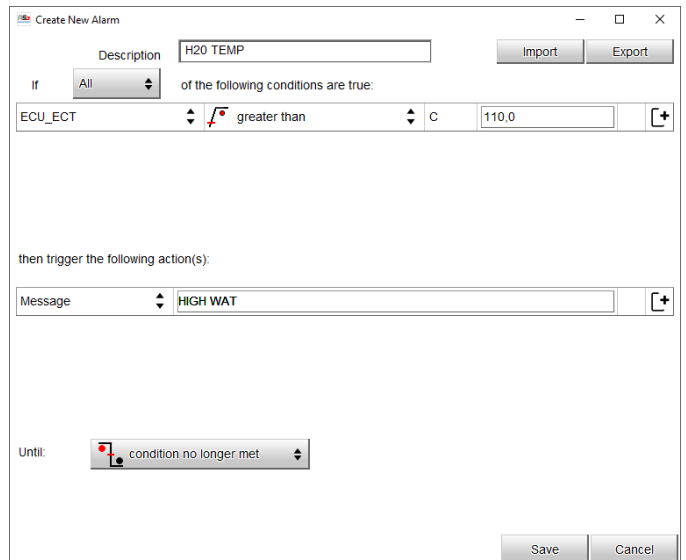
- once each channel is set, enter in the “Shift Lights and Alarms” tab (1; following image), from whom it is possible to set the device alarms, clicking “Add New Alarm”



- click “Add New Alarm” and, after a name has been assigned and the conditions have been set, using the desired channels (add/remove more conditions clicking and ) , from the drop-down menu it is possible to choose the associated action type

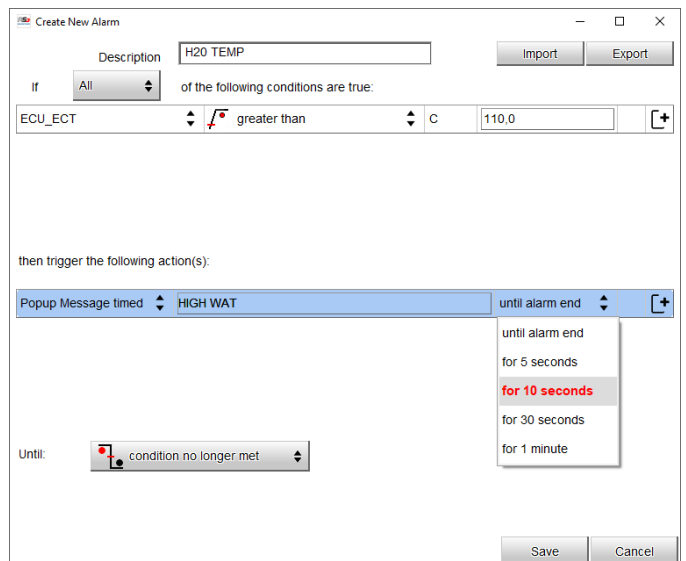
## Configuring

- **Message** (selected by default): it is possible to insert a text that will appear in the lower display zone in a red stripe



The screenshot shows the 'Create New Alarm' dialog box. The 'Description' field contains 'H2O TEMP'. The 'If' section is set to 'All' and 'of the following conditions are true:'. A single condition is listed: 'ECU\_ECT' is 'greater than' '110.0' with a unit of 'C'. The 'then trigger the following action(s):' section has 'Message' selected, with the text 'HIGH WAT' entered in the adjacent field. The 'Until:' section is set to 'condition no longer met'. 'Save' and 'Cancel' buttons are at the bottom right.

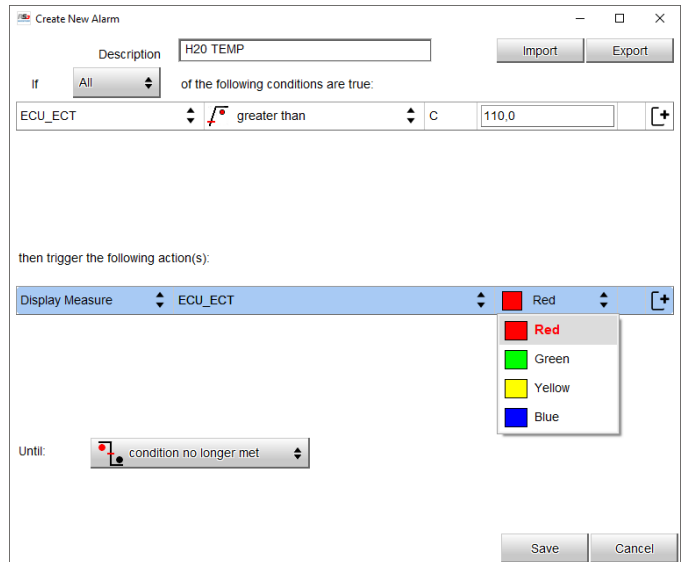
- **Popup Message Timed:** it is possible to insert a text that will appear in a full display popup window, and set its lasting time



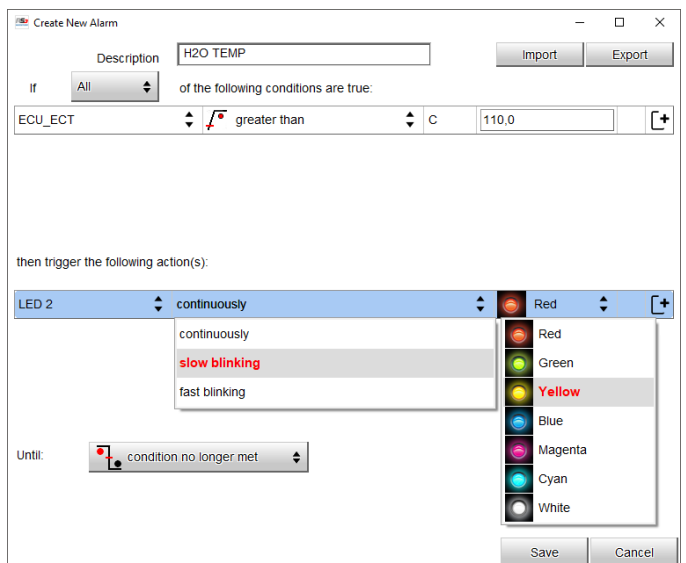
This screenshot is identical to the one above, but the 'Popup Message timed' action is selected. A dropdown menu is open next to the 'until alarm end' field, showing options: 'until alarm end', 'for 5 seconds', 'for 10 seconds' (highlighted in red), 'for 30 seconds', and 'for 1 minute'. The 'Save' and 'Cancel' buttons are at the bottom right.

## Configuring

- **Display Measure:** it is possible to assign a color to the display measure regarding the verified event. Select a channel and choose one of the 4 available colors

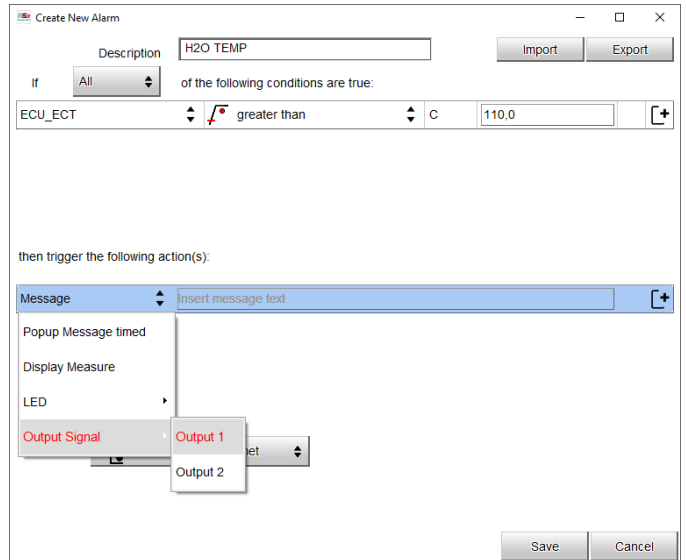


- **LED:** it is possible to select one of the available LEDs, choosing a blinking pattern (solid, slow blink, fast blink) and one of the 7 available colors



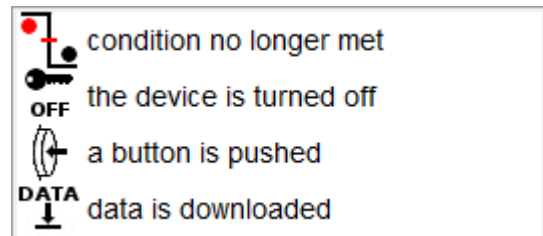
## Configuring

- **Output Signal:** controls the output signal(s) which activates an open circuit or a switch to ground, this is used to drive external devices (es. Lamp, fan ecc...)



The “Until” labelled drop-down menu allows to set the alarm come back condition. It is possible to nullify the alarm action:

- when the condition is not verified anymore
- when the vehicle is turned off
- when the driver pushes a button
- after recorded data have been downloaded



**N.B.:** the alarm reset condition does not involve the Popup Message Timed, since its timing is set independently from its configuration bar.