

## Configuring

## 1 – Configuring SmartyCam with Solo 2 DL

**Question:**

How can I configure SmartyCam HD Rev 2.1/GP HD (from here onwards SmartyCam) with Solo 2 DL?

**Answer:**

For a good SmartyCam-Solo 2 DL communication you must:

- physically connect the devices
- configure both your devices using Race Studio 3 software

### 1.1 – Physical connection

To physical connect the devices use the CAN cable you find in SmartyCam kit and connect camera “ext” connector to Solo 2 DL CAN EXP connector (5 pins). Solo 2 DL 7 pins connector is needed to connect Solo 2 DL to the vehicle ECU (via CAN, K-Line or RS232).



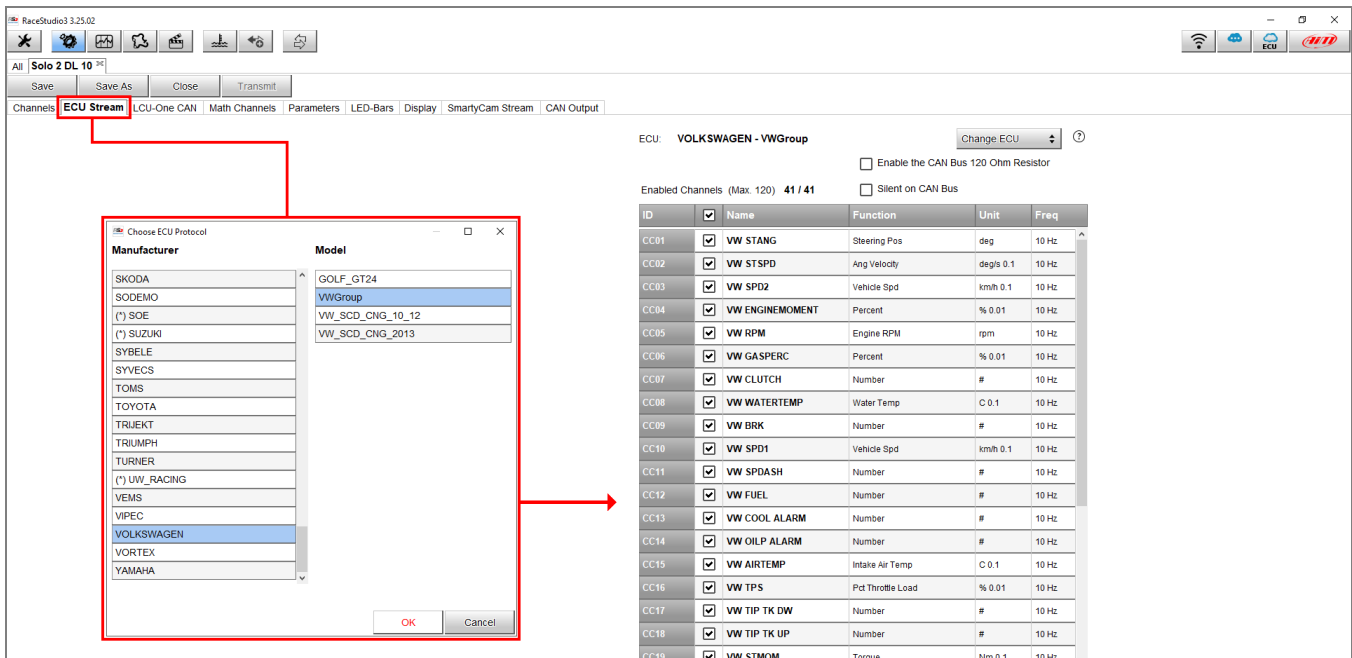


## Configuring



## Configuring

- To configure the device with the ECU model it is connected to, enter the “ECU Stream” tab and select the ECU manufacturer/model (in the following example, VOLKSWAGEN – VWGroup communication protocol has been chosen): all the provided channels by the ECU are listed. Each channel can be modified: clicking on each one, it is possible to set a new name, change sampling frequency, measurement unit (if alternative ones are available) and the number of decimal places to show.



ECU: VOLKSWAGEN - VWGroup

Enabled Channels (Max. 120) 41 / 41

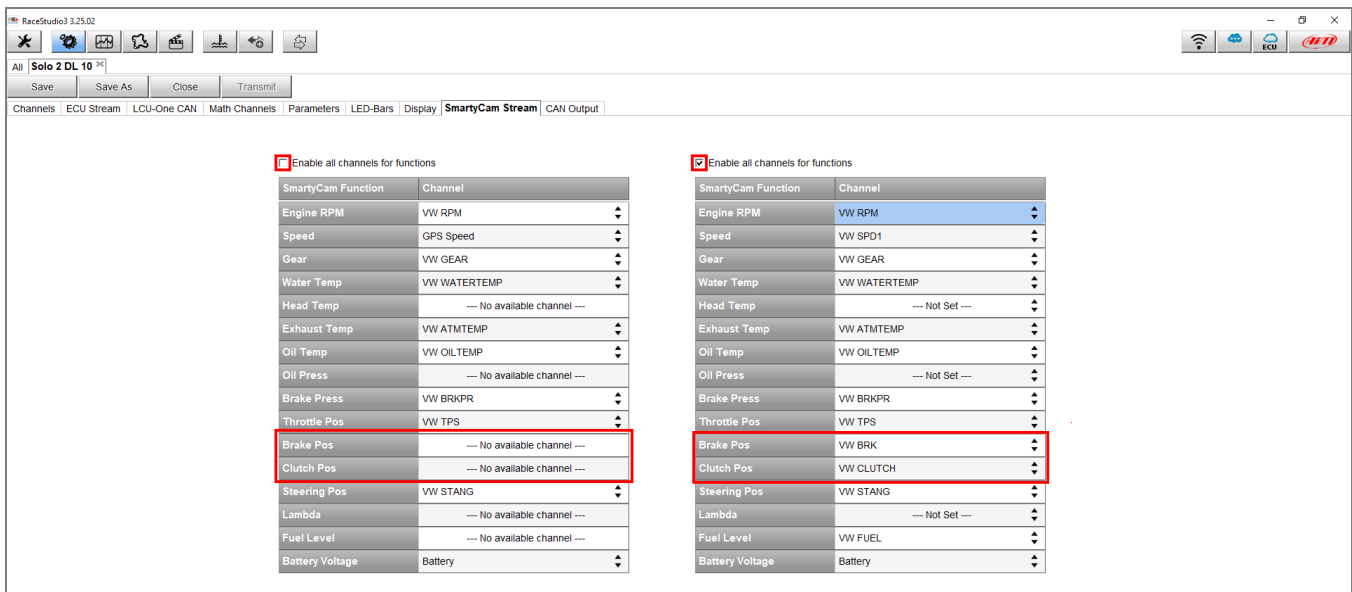
ID	✓	Name	Function	Unit	Freq
CC01	✓	VW STANG	Steering Pos	deg	10 Hz
CC02	✓	VW STSPD	Ang Velocity	deg/s 0.1	10 Hz
CC03	✓	VW SPD2	Vehicle Spd	km/h 0.1	10 Hz
CC04	✓	VW ENGINEMOMENT	Percent	% 0.01	10 Hz
CC05	✓	VW RPM	Engine RPM	rpm	10 Hz
CC06	✓	VW GASPERC	Percent	% 0.01	10 Hz
CC07	✓	VW CLUTCH	Number	#	10 Hz
CC08	✓	VW WATERTEMP	Water Temp	C 0.1	10 Hz
CC09	✓	VW BRK	Number	#	10 Hz
CC10	✓	VW SPD1	Vehicle Spd	km/h 0.1	10 Hz
CC11	✓	VW SPDASH	Number	#	10 Hz
CC12	✓	VW FUEL	Number	#	10 Hz
CC13	✓	VW COOL ALARM	Number	#	10 Hz
CC14	✓	VW OILP ALARM	Number	#	10 Hz
CC15	✓	VW AIRTEMP	Intake Air Temp	C 0.1	10 Hz
CC16	✓	VW TPS	Pct Throttle Load	% 0.01	10 Hz
CC17	✓	VW TIP TK DW	Number	#	10 Hz
CC18	✓	VW TIP TK UP	Number	#	10 Hz
CC19	✓	VW STMOM	Torque	Nm 0.1	10 Hz

**N.B.: to know the available protocols into the Race Studio 3 database and their compatibility, visit the Documentation -> ECU Connections -> Stock/Racing area of our website [www.aim-sportline.com](http://www.aim-sportline.com).**



## Configuring

To set SmartyCam function, enter the “SmartyCam Stream” tab: the software shows a panel (image below on the left) that allows to associate available functions (left column) to SmartyCam channels (right column). Channels list is filtered according to the functions set. To set functions different from default ones, enable “Enable Channel for all Functions” checkbox (image below on the right). Once all channels set press “Transmit” to transmit the configuration to the Solo 2 DL.



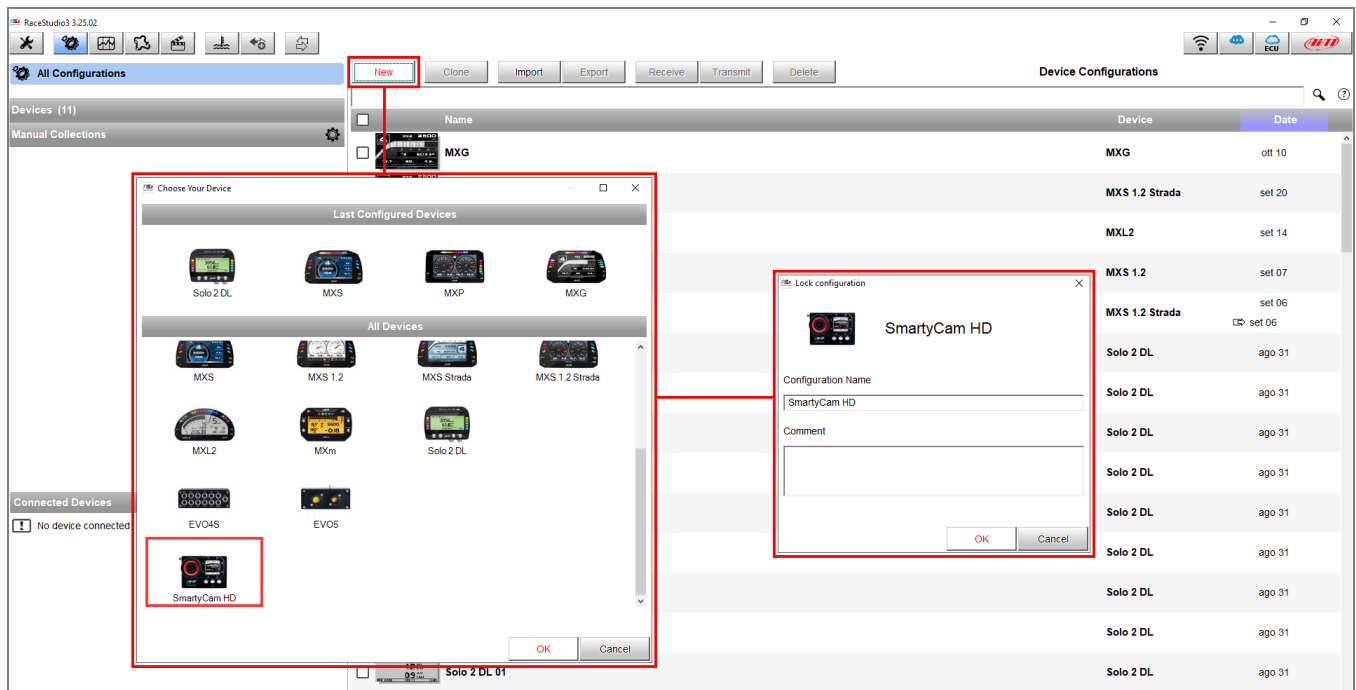
## Configuring

## 1.3 – Configuring SmartyCam with Race Studio 3

To configure SmartyCam you should have installed Race Studio 3<sup>1</sup> software on your PC. Last releases are always downloadable from Download area -> Software section of AiM website [www.aim-sportline.com](http://www.aim-sportline.com).

Follow these steps:

- run Race Studio 3
- connect SmartyCam to the PC using the mini USB cable included in the kit
- press "Configurations" icon
- press "New"
- select "SmartyCam" and press "OK"
- fill in configuration name and press "OK"



<sup>1</sup> Please note: Race Studio 2 does not support AiM cameras



## Configuring

SmartyCam configuration page shows up.

- on the right you see a number of overlays you can drag and drop in left part of the window (many sets are available).
- bottom of the window you see each overlay layers, the settings of which you can modify.

Function	Unit	Scale
Engine RPM	rpm	10000
Speed	km/h	300
Brake Pos	%	0 100
Throttle Pos	%	0 100
Gear	#	