

Race Studio 3 Video Recovery

Question:

How can I recover my damaged movie?

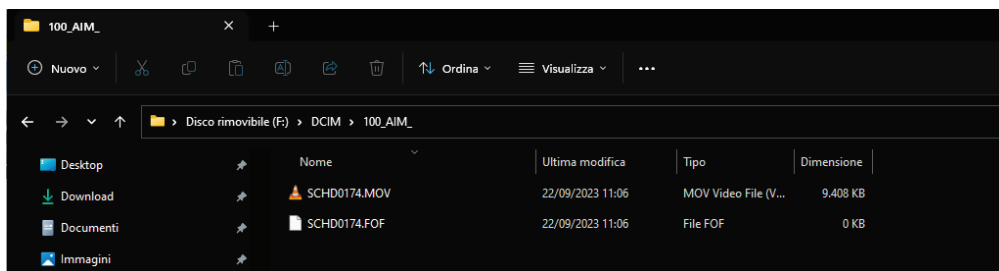
Answer:

Typically, corrupt movies can be caused by several factors, using a corrupt SD card, using a micro-SD card with adapter (not recommended) or extracting the SD card before proper closing of the movie. You can recover the movie by following the steps below:

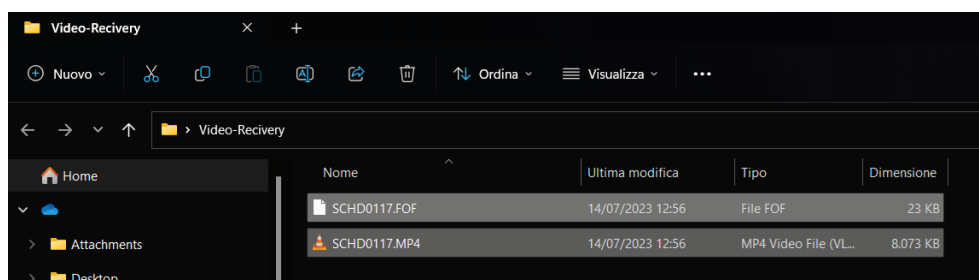
Make sure to check that the software is updated to the latest version released.

When a movie gets corrupted, two files are created in the DCIM – _100AiM folder of the SmartyCam SD card:

- For the category SmartyCam 2.1/2.2 you will find files . FOF and . MOV

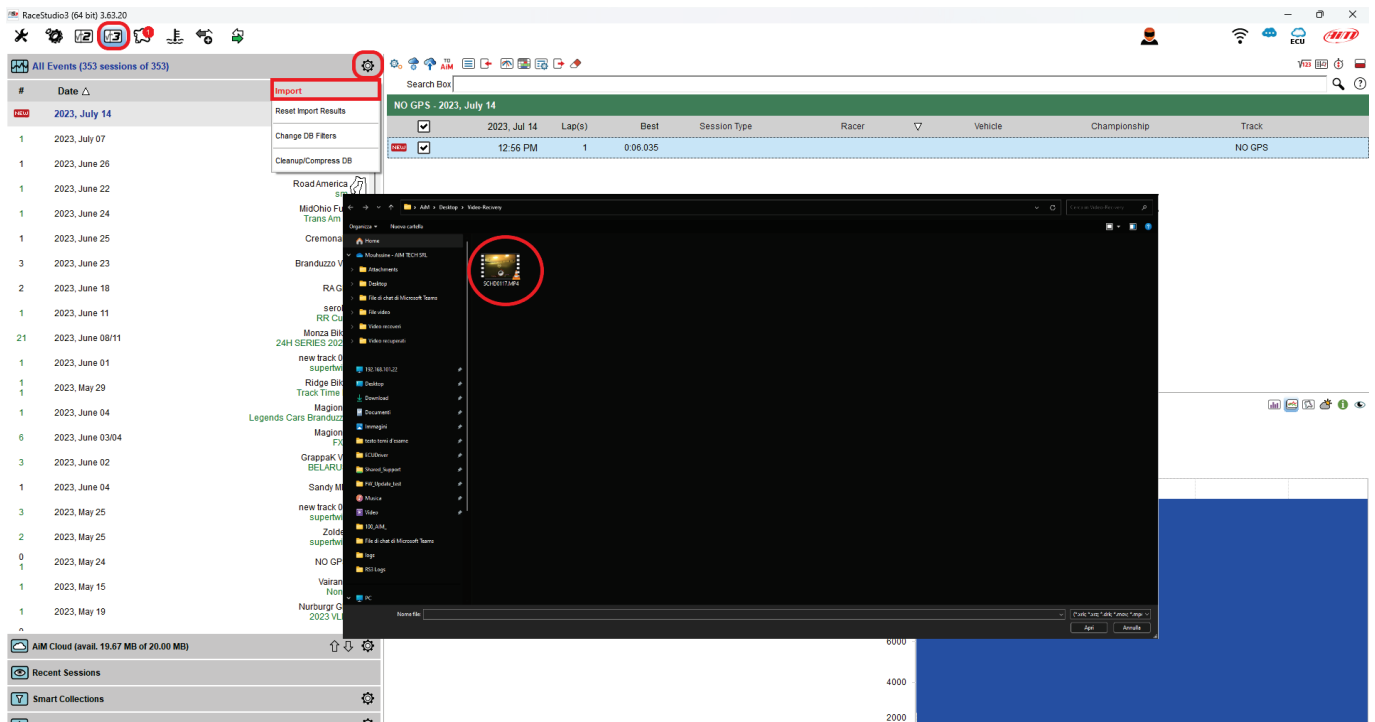


- For the category SmartyCam 3 you will find files . FOF and . MP4





Open the RS3 Analysis software and import the MP4 or MOV file using the IMPORT command by entering the location of the folder where it is located:



Once you import the file to RS3 Analysis, the movie will be restored and the MP4 (or MOV) file in the source folder will be usable again.