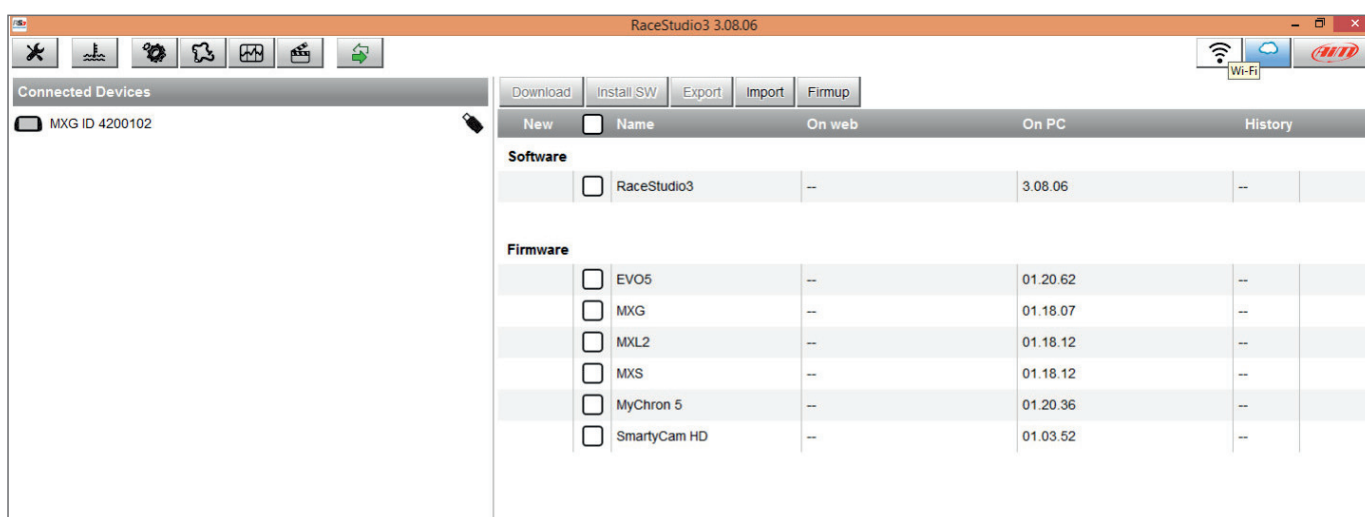


How to upgrade EVO5 | MXL2 | MXG | MXS | MXS Strada | MyChron5

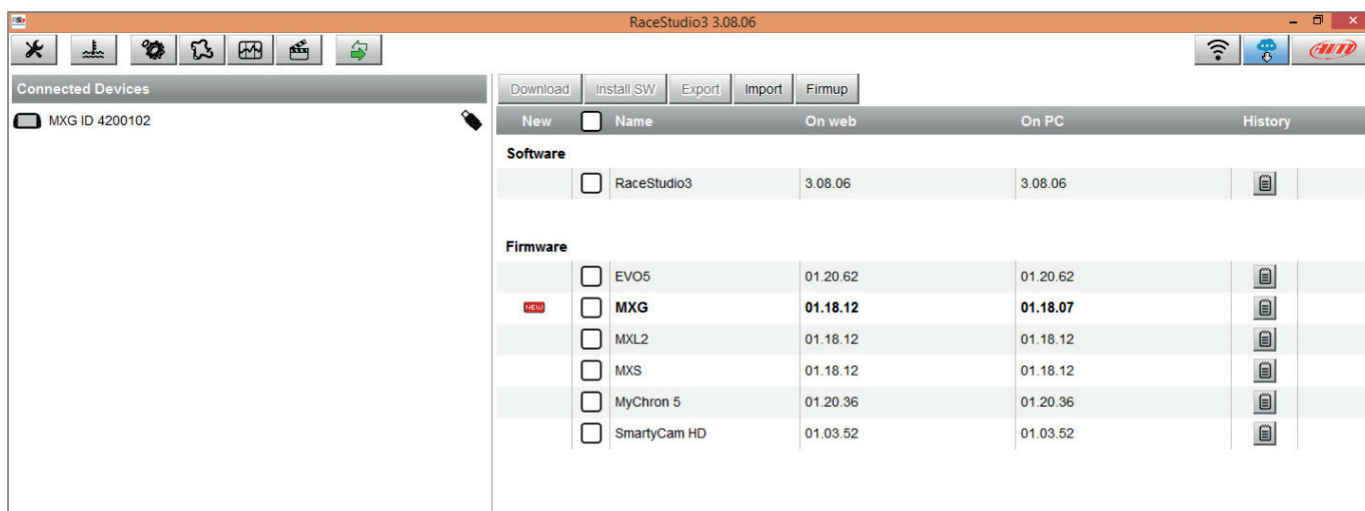
The firmware of AiM loggers can be upgraded directly from Race Studio 3, following the steps described below.

Please note: the pictures refer to an MXG, but the same procedure applies to other devices as well.

- Run Race Studio 3 software
- Connect the device to your PC through the USB cable or via Wi-Fi
- Click "web updates" icon (the cloud you find on the top right corner) and wait for it to become blue (a white icon indicates the software is checking for updates)



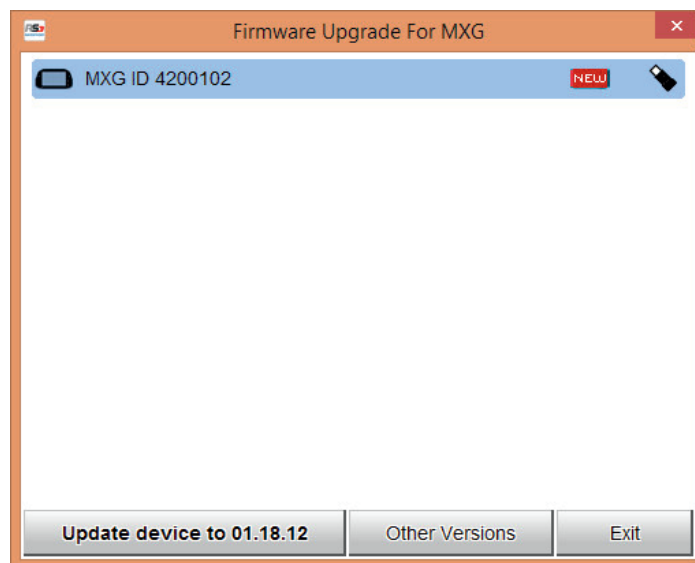
- If a new firmware is available on AiM server it will be shown bold in the firmware part of the software central page- image below shows that an MXG firmware release is available
- To download the firmware select the related checkbox and click "Download" button



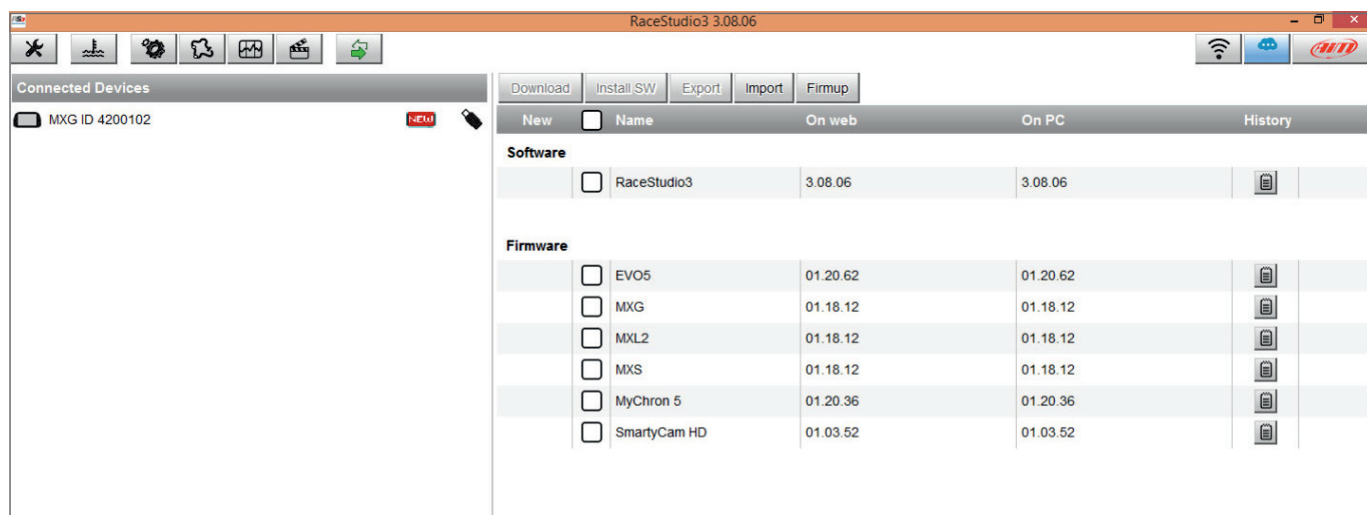
How to upgrade EVO5 | MXL2 | MXG | MXS | MXS Strada | MyChron5

Page 2

- After download, firmware upgrade panel shows up



- Click "Update device to xx.yy.zz" button to start upgrading
- In case a firmware release newer than the one installed on your logger is already stored in your PC a "NEW" label appears (in the left panel) right of the device icon



- Click "Firmup" button and then proceed as above

How to upgrade

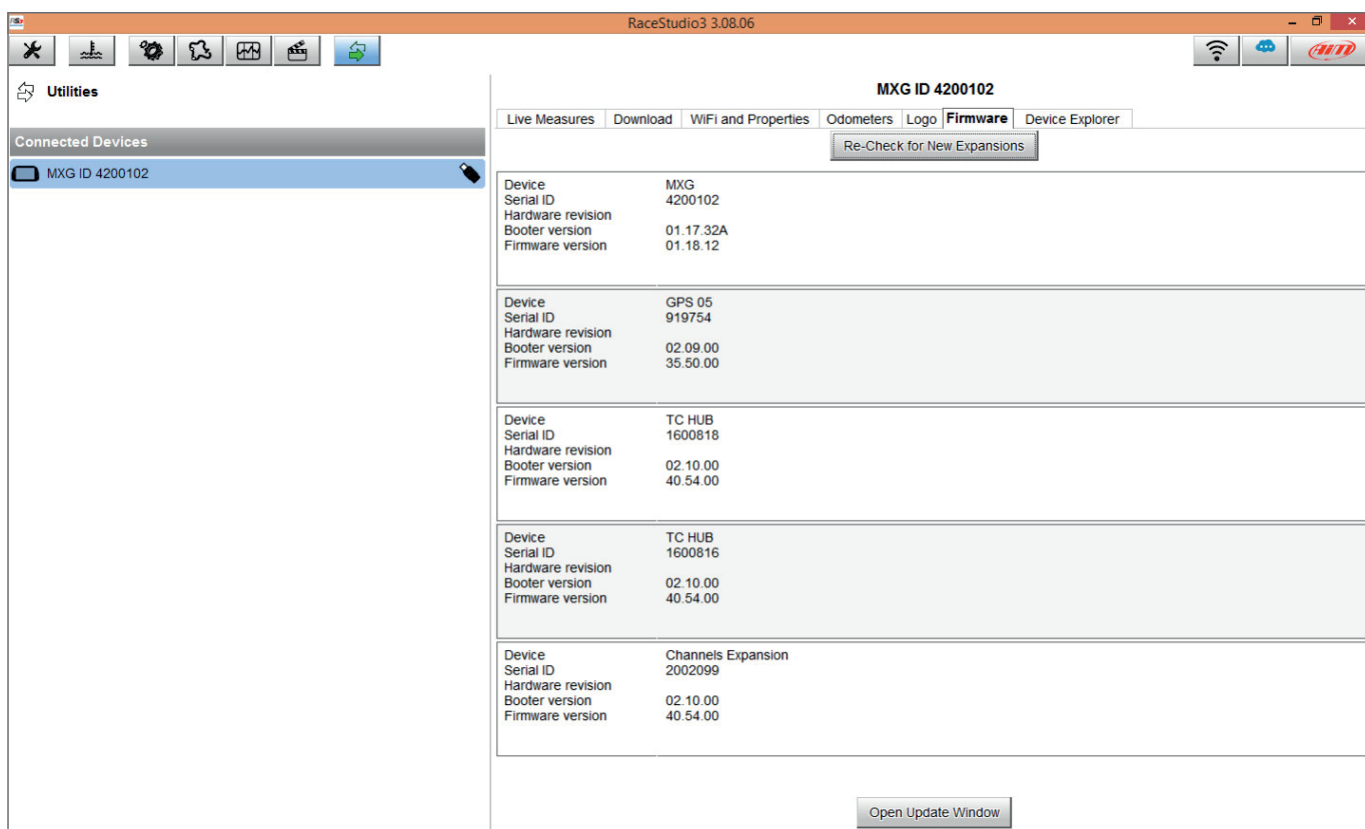
EVO5 | MXL2 | MXG | MXS | MXS Strada | MyChron5

Page 3

Please remember: an Internet connection is needed to download the firmware file while is not necessary to perform upgrading procedure once the file downloaded.

To know which firmware version is installed on your device click your "Device" icon in the left panel and a pop up message shows you the information.

In case more CAN expansions are connected to your device click "Devices" icon then click on "Firmware tab" and all devices firmware releases are shown in detail.



The screenshot displays the RaceStudio3 3.08.06 software interface. The left sidebar shows the 'Utilities' menu with 'Connected Devices' expanded, listing 'MXG ID 4200102'. The main window is titled 'MXG ID 4200102' and features a tabbed interface with 'Live Measures', 'Download', 'WiFi and Properties', 'Odometers', 'Logo', 'Firmware' (selected), and 'Device Explorer'. A 'Re-Check for New Expansions' button is visible. The 'Firmware' tab displays a table of device information:

Device	Serial ID	Hardware revision	Booter version	Firmware version
MXG	4200102		01.17.32A	01.18.12
GPS 05	919754		02.09.00	35.50.00
TC HUB	1600818		02.10.00	40.54.00
TC HUB	1600816		02.10.00	40.54.00
Channels Expansion	2002099		02.10.00	40.54.00

An 'Open Update Window' button is located at the bottom right of the main window.