

Race Studio 3 - 3.09.00 April 2016

The improvements introduced in this version are related to:

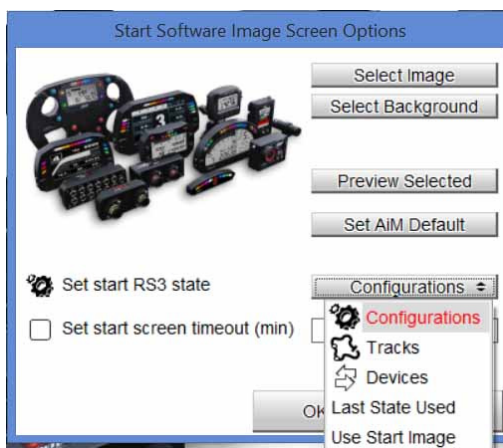
- Start Page Management
- CAN Output Management

1. Start Page Management

The Start procedure is now much faster than in the previous release, and, if desired, a cover is shown:



Right Click on this page lets you personalize it in different ways. The following menu appears:



You can:

- select the desired Starting Page (typically, the Team Logo), and background, in case the selected page is small.

- avoid to use the cover, jumping directly to the desired page. You can choose between:

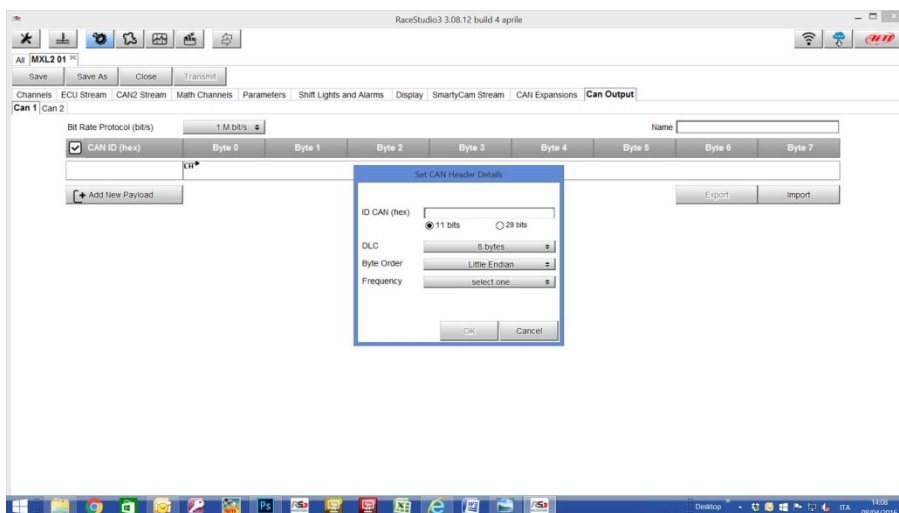
- Configuration Page
- Tracks Page
- Devices Communication Page
- Last used Page
- Start Image Page

Finally, it is possible to set a timeout, after which, without any activity, RS3 swaps to the Start Screen Page. This option can be useful for the teams that would like to show their logo when the PC is not in use.

2. CAN Output Management

The CAN Output is available for all our new systems: MXL2, MXG, MXS, EVO5, EVO4S (soon).

Basically, it is possible, during the configuration, define a CAN Stream Output for both ECU CAN and CAN2.



It is possible to define:

ID, Byte number, Byte order, frequency (up to 20 Hz) per every payload.

The fields can be of 1, 2, 4 bytes and the user can transmit every field, coming from Analog, digital, internal channel, Expansions, ECU or GPS Module.