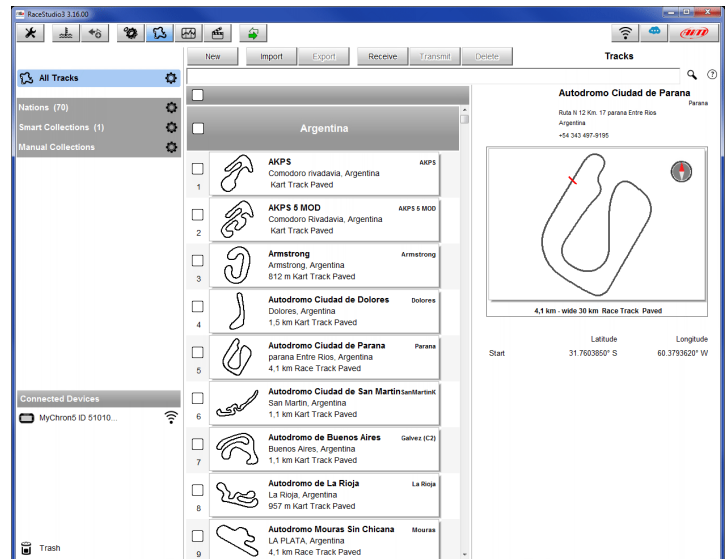


# AiM User Guide

## Race Studio 3 Track Manager

Release 1.01



## 1 – Introduction

Track Manager is the Race Studio 3 section dedicated to tracks management. Here is possible to create and delete new tracks, modify the settings, transmit and receive them to/from the AiM devices. To access, press the “Tracks” icon highlighted below.





## 2 – Main page

The main page is divided in three columns.

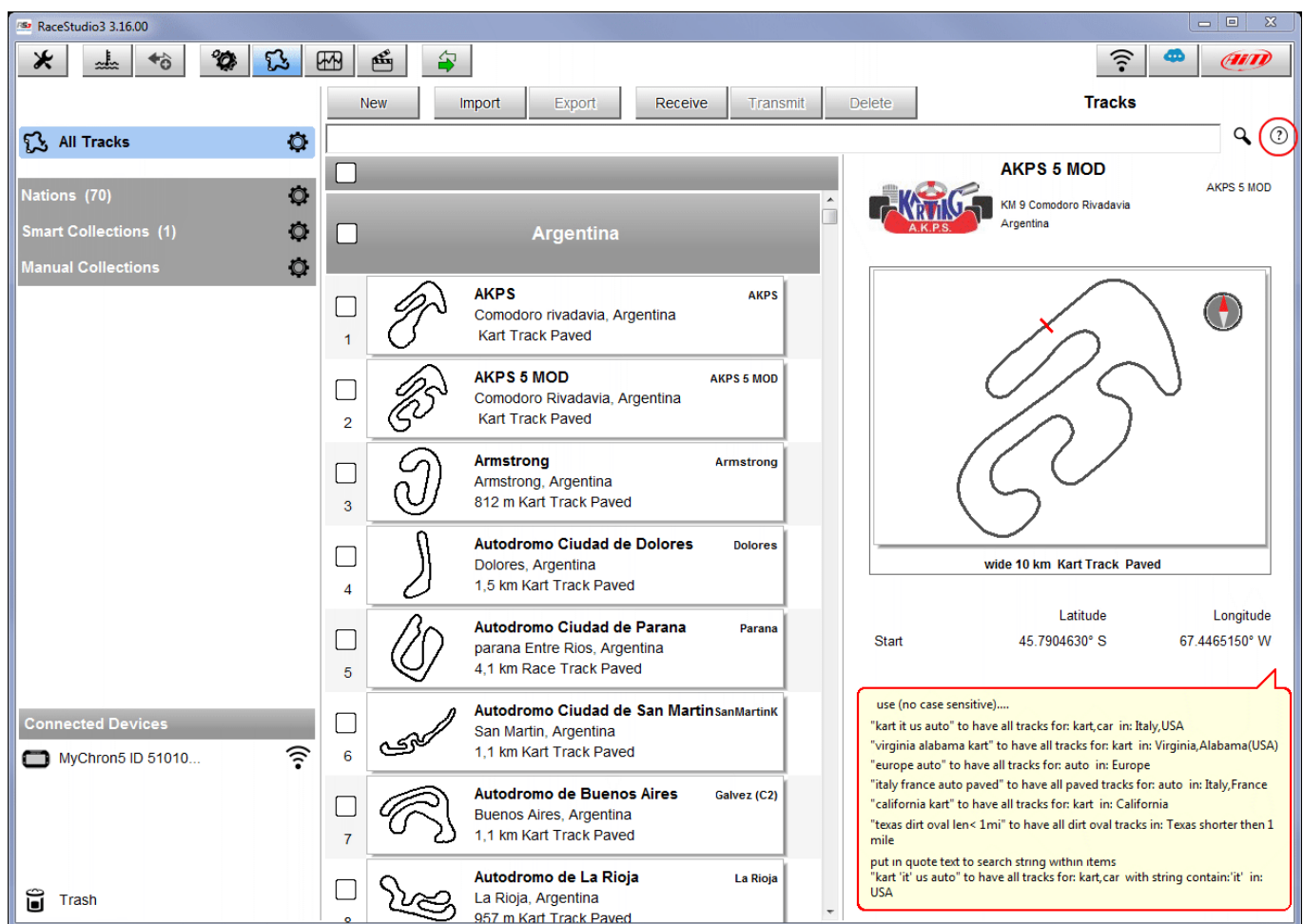
The column on the **Left** shows:

- On top, the filters that allow to merge many tracks following customized criteria. By default, all tracks are shown (the light blue "All Tracks" filter in the image below).
- Bottom left, the connected devices (in the image, "MyChron5 ID 51010...")

The column **in the middle** shows:

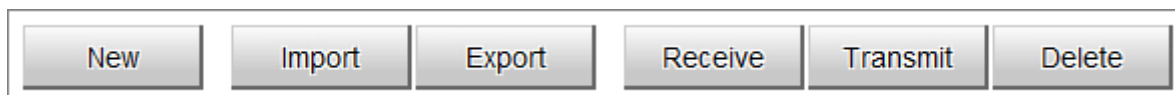
- On top a fast search bar, that allows to select the tracks which satisfy your personal research criteria; by pressing "?" a pop-up window shows research examples (highlighted in red below).
- All the tracks listed in Race Studio 3 database. It automatically updates at launch - if an internet connection is available.

The column on the **Right** shows the track data sheet you mouse over. The tab contains all the available information about that track. When a device is connected, a layer showing the tracks available on the device is prompted.



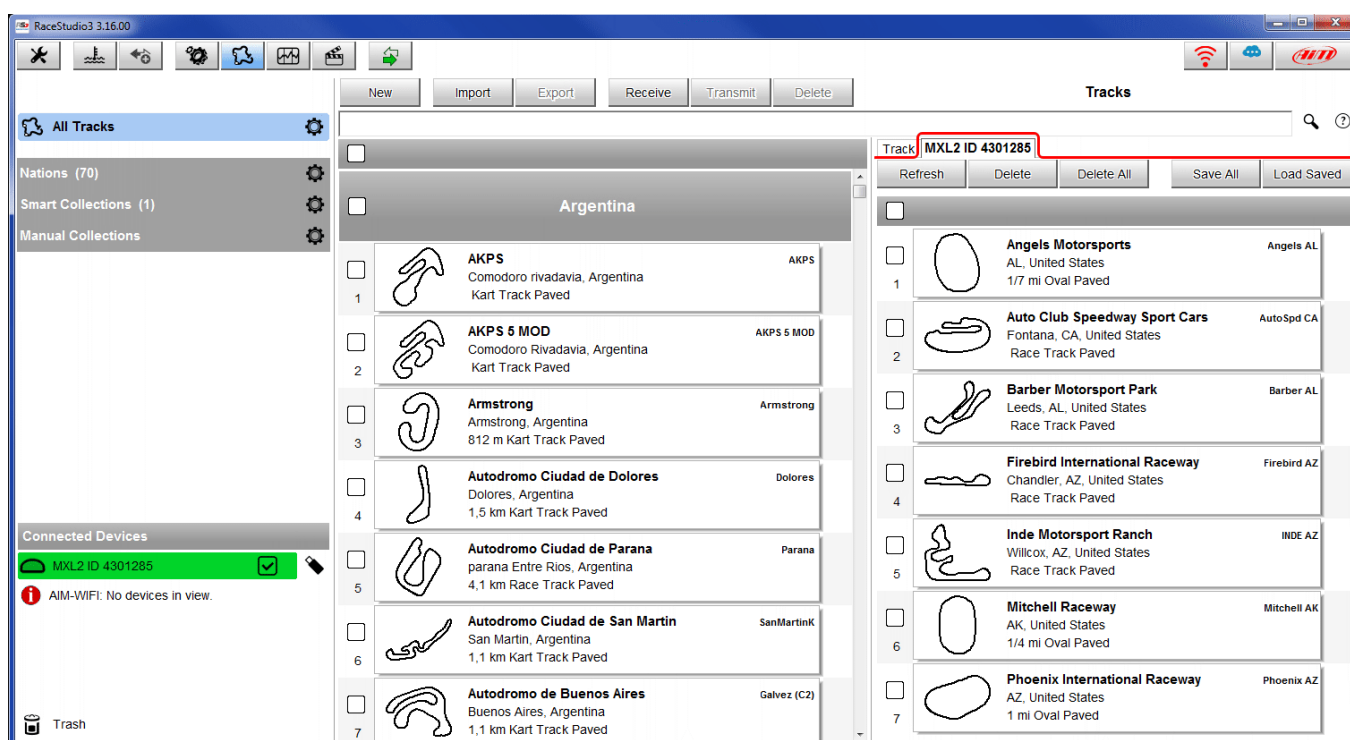


The keyboard placed above the central column allows to:



- Create a new track ("New")
- Import in the software one or more tracks saved in a PC folder or stored in a peripheral device ("Import"); only ".ztracks" format files can be imported.
- Export one or more selected tracks to a specific PC folder or to a peripheral device ("Export"); exported files are saved in ".ztracks" format.
- Receive one or more tracks from an AiM connected device ("Receive"); this function is available in systems equipped with the "Autolearning" function (at the moment MyChron5, others will follow) and allows to complete that track data.
- Send one or more tracks to an AiM connected device by selecting them in the central column (Transmit");
- Cancel track created by the user ("Delete"); it's not possible to delete tracks listed in the Race Studio 3 database.

"Receive" and "Transmit" buttons can be activated only when an AiM system is connected to the PC. To do so, turn the device on and connect it using the proper USB cable (if available). For Wi-Fi connection, press WiFi icon (red in the image below) and select the device to connect. When the device is connected, the column on the right will show, additionally to the "Tracks" layer, another layer showing the name of the connected device.





This layer shows a keyboard that allows to:

- Manually update a track list ("Refresh"): at each connection, an automatic refresh is performed.
- Select the tracks to be deleted from the device memory ("Delete").
- Cancel all the tracks stored in the device memory ("Delete All").

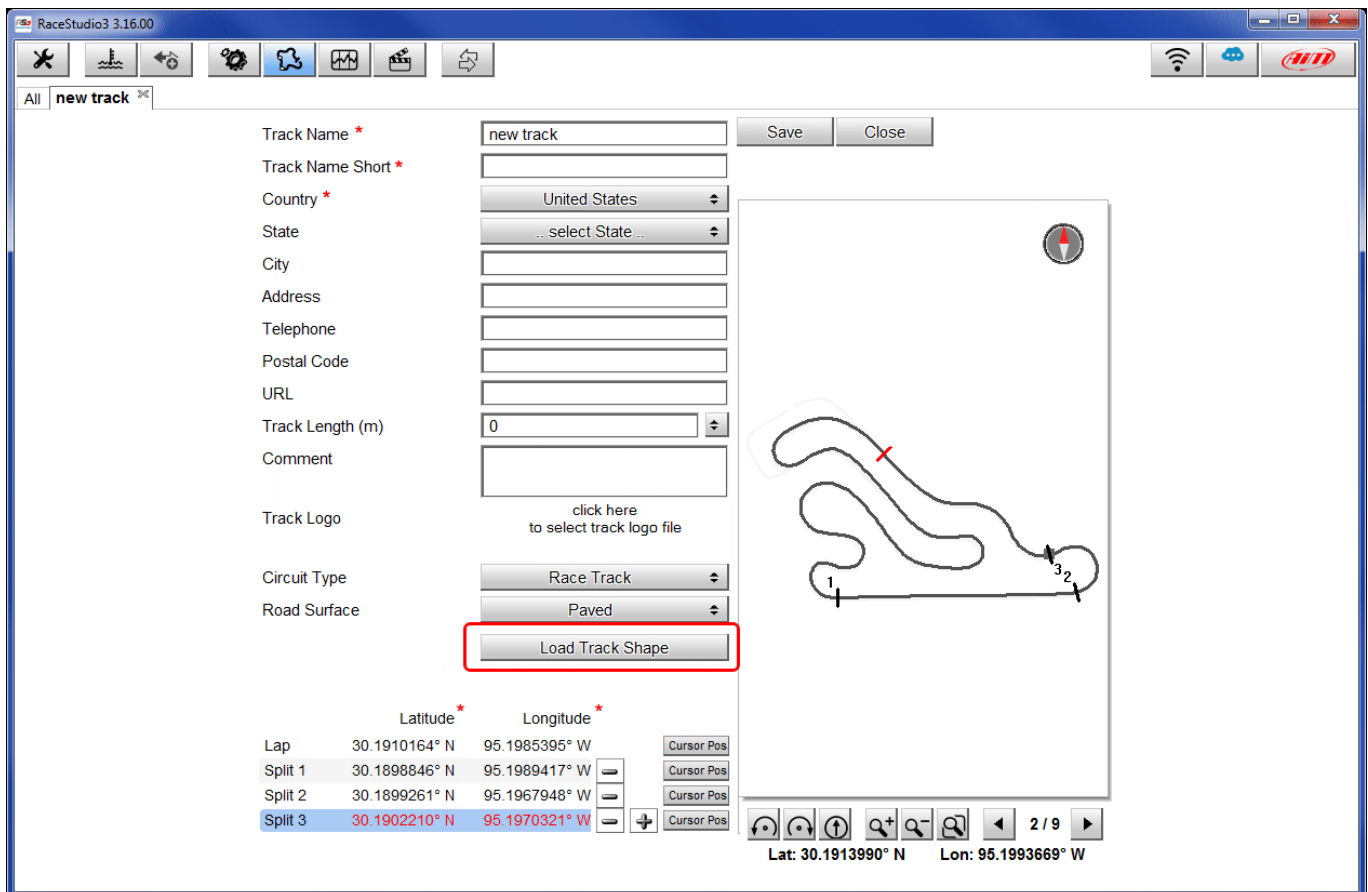
Track	<b>MXL2 ID 4301285</b>			
Refresh	Delete	Delete All	Save All	Load Saved

## 2.1 – How to create a new track

To create a new track press “New” and the page shown below appears. Fields with an asterisk can not be left blank.

The **“Track Name Short”** is the name that will be shown in the device track list: you can use 12 types max.

It is recommended to fill the **“Circuit Type”** and **“Road Surface”** fields because - even if they are not necessary - they are used by the research filters.



new track

Save Close

Track Name \*

Track Name Short \*

Country \* United States

State ... select State ...

City

Address

Telephone

Postal Code

URL

Track Length (m) 0

Comment

Track Logo

click here to select track logo file

Circuit Type Race Track

Road Surface Paved

Load Track Shape

Latitude \* Longitude \*

Lap	Latitude	Longitude	
Lap	30.1910164° N	95.1985395° W	Cursor Pos
Split 1	30.1898846° N	95.1989417° W	Cursor Pos
Split 2	30.1899261° N	95.1967948° W	Cursor Pos
Split 3	30.1902210° N	95.1970321° W	Cursor Pos

Lat: 30.1913990° N Lon: 95.1993669° W

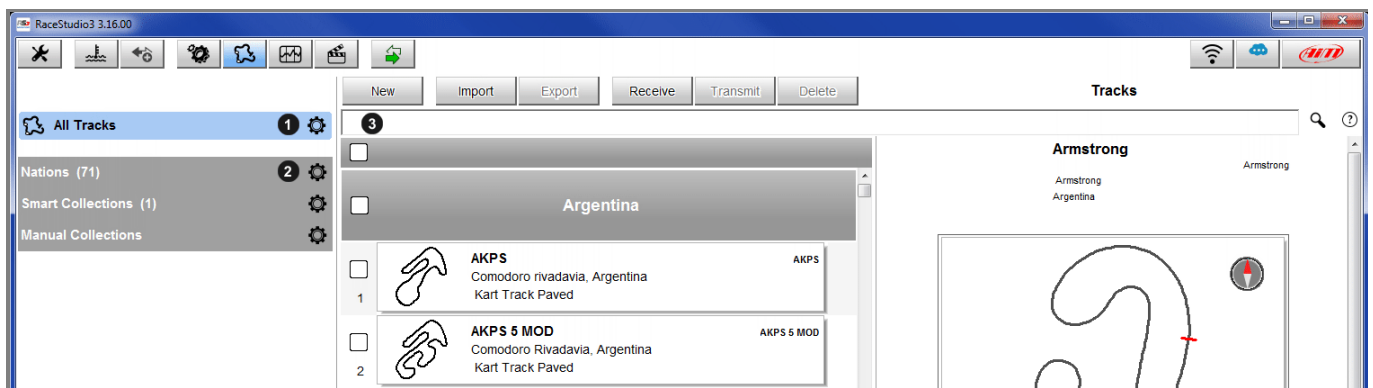
If the track shape is available, it is possible to upload it by pressing **“Load Track Shape”** and browsing PC folders. The software just admits “.tkk” files – generated by Race Studio 3 - and “.gpk”, generated from data download. When the track is uploaded, the software can automatically calculate its length (in miles or meters). Start/finish line (Lap) can be added by mousing its point on the track and pressing “Cursor Pos”. To insert the splits press “+” and repeat the operation. Splits are marked by black segments and numbers. All these points can also be added manually if you know their coordinates. MyChron5 allows to read their coordinates.

Press “Save” and the new track will appear in the list labelled “User”.


## 3 – Filters and Collections

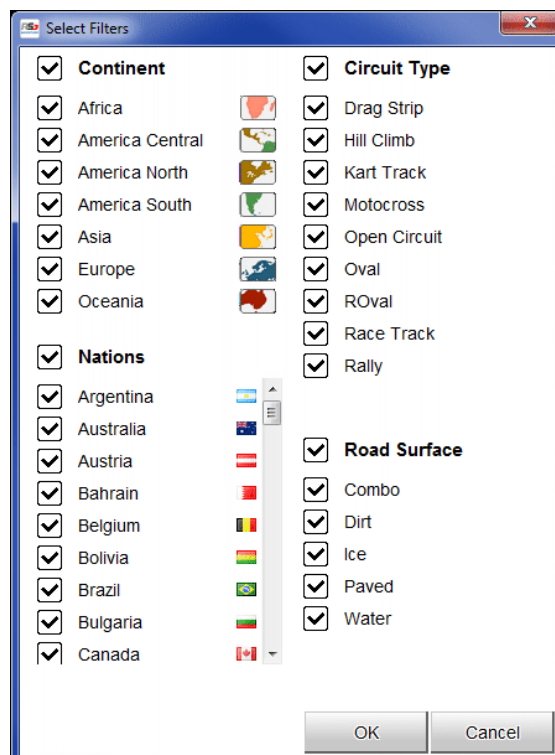
The software allows to research, view and merge the tracks following default or customized parameters. This is possible using filters and collections. The filters can be static (1 and 2 in the image below) and dynamic (3).

The software automatically shows all the tracks listed in the database.



**Static filters** (1. all Tracks and 2. Nations) are placed on the left and are stored by the software.

- “All Tracks”: by clicking on the settings icon , a panel (with all the fields automatically activated) appears, that allows to filter the tracks displayed in the central column by continent, nation/state, track and road surface criteria.

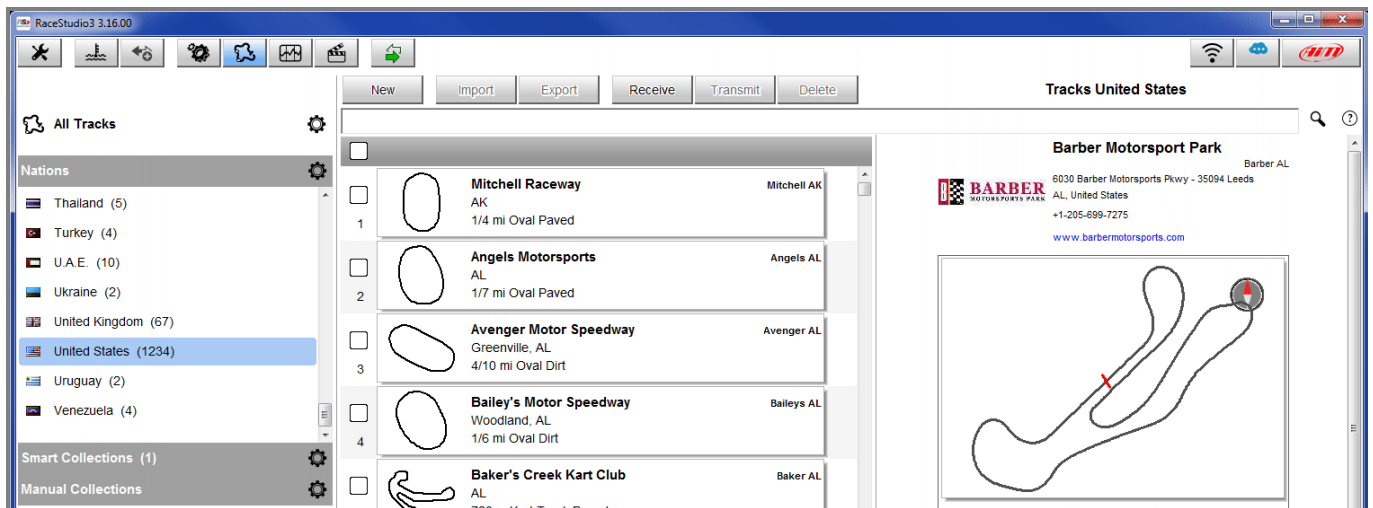




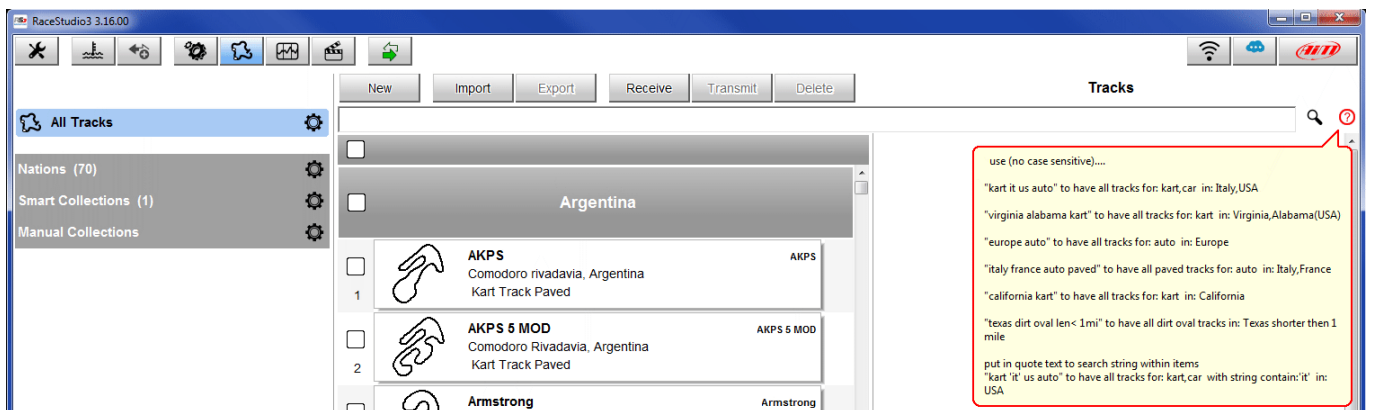


## User Guide

- “Nations”: by clicking on the settings icon, the list of the available nations appears, that allows to filter the tracks shown in the central column following the nation criteria. In the image below, USA tracks are shown (state by state in alphabetical order).



**Dynamic filter** (3) is above and it is not memorized by the software. It allows to mix more research parameters. The “?” on the right of the bar shows research hints.



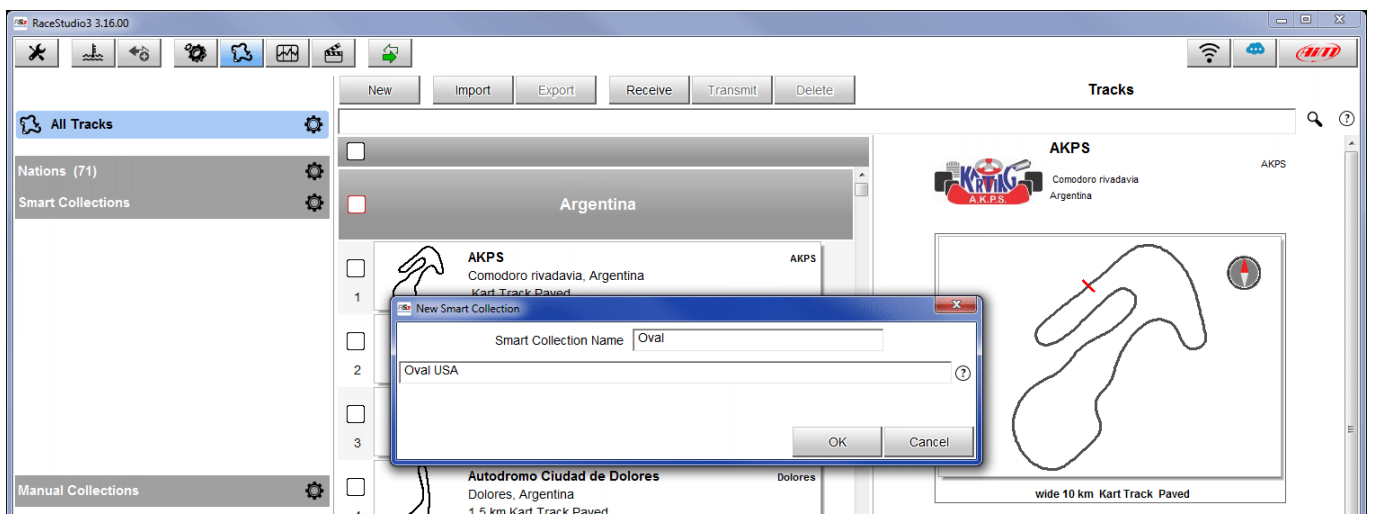




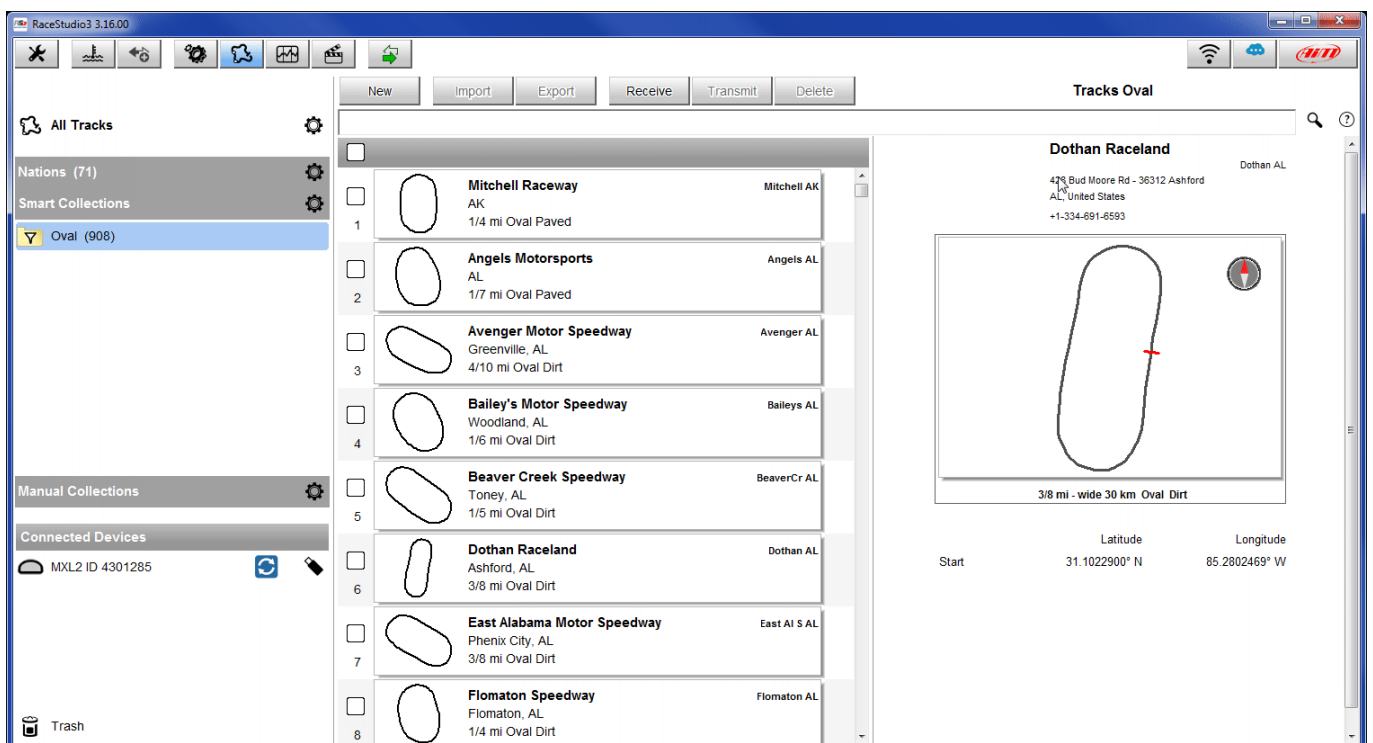
**Collections** can be “Smart” or “Manual”.

## Smart Collections:

- By clicking on the settings icon, a panel containing a dynamic filter appears; you just have to name the collection and set the filters, then press “OK”. The “?” shows research hints.



- In the left column the new collection folder is shown with its number of tracks. In the central column the tracks that respect the selected parameters are shown.





## Manual Collections:

- By clicking on the settings icon a panel appears: insert collection name and press OK. The folder will be shown on the left column.
- Manually select the tracks to be added and drag them into the folder.
- Once all the tracks have been selected, by clicking on the collection folder the central column will show its tracks.

